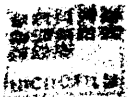
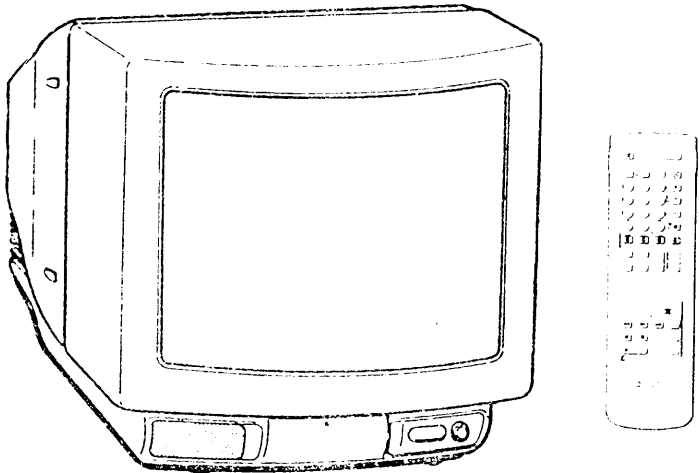


SERVICE MANUAL

BE-3B CHASSIS

MODEL	COMMANDER	DEST.	CHASSIS NO.	MODEL	COMMANDER	DEST.	CHASSIS NO.
KV-M2540D	RM-833	AEP	SCC-G77G-A	KV-M2541E	RM-833	Spanish	SCC-G82E-A
KV-M2541D	RM-833	AEP	SCC-G77F-A	KV-M2541L	RM-833	IRISH	SCC-G83D-A
KV-M2541A	RM-833	Italian	SCC-G81F-A	KV-M2541U	RM-833	UK	SCC-G87D-A
KV-M2540B	RM-833	French	SCC-G85F-A	KV-M2540K	RM-833	OIRT	SCC-G86E-A
KV-M2540E	RM-833	Spanish	SCC-G82F-A	KV-M2541K	RM-833	OIRT	SCC-G86D-A



TRINITRON[®] COLOR TV
SONY[®]

Sony Corporation
Consumer A & V Products Company
TV & Display Products Div.

English
94GP7071-1
Printed in U.K.
© 1994.7

KV-M254

KV-M254

1 2 3 4 5 6 7 8 9 10 11 12 13

A

B

C

D

E

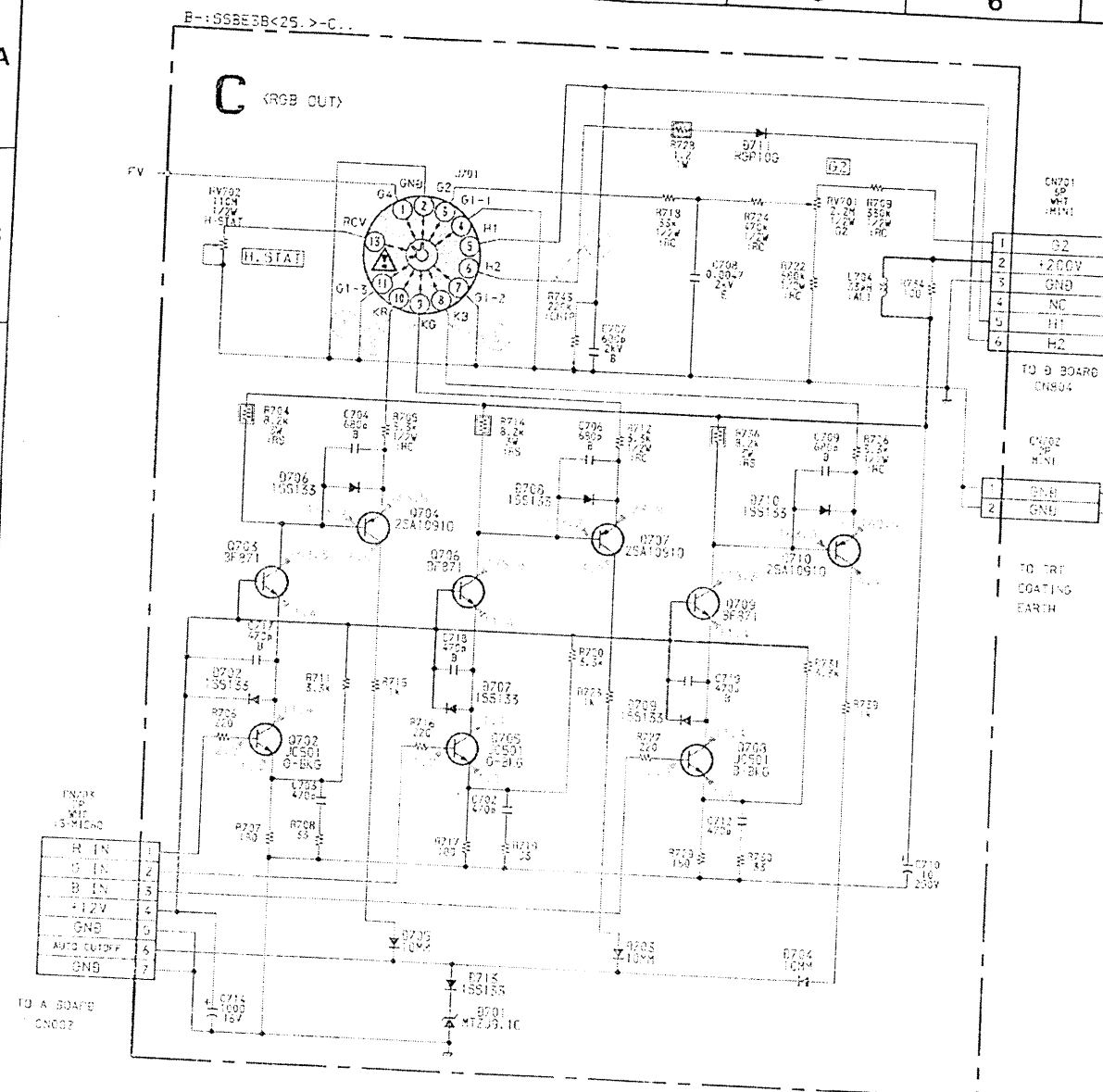
F

G

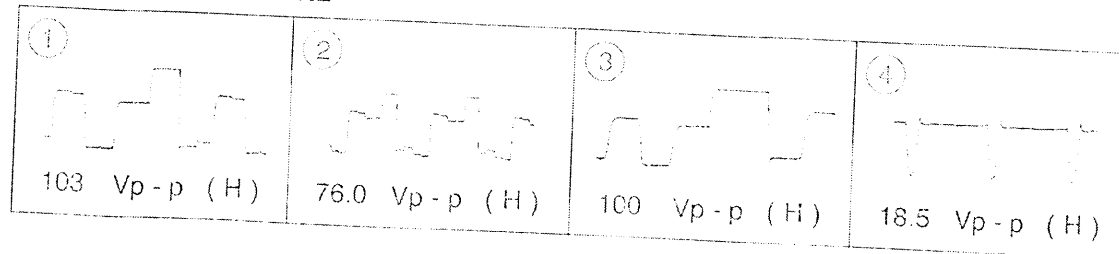
H

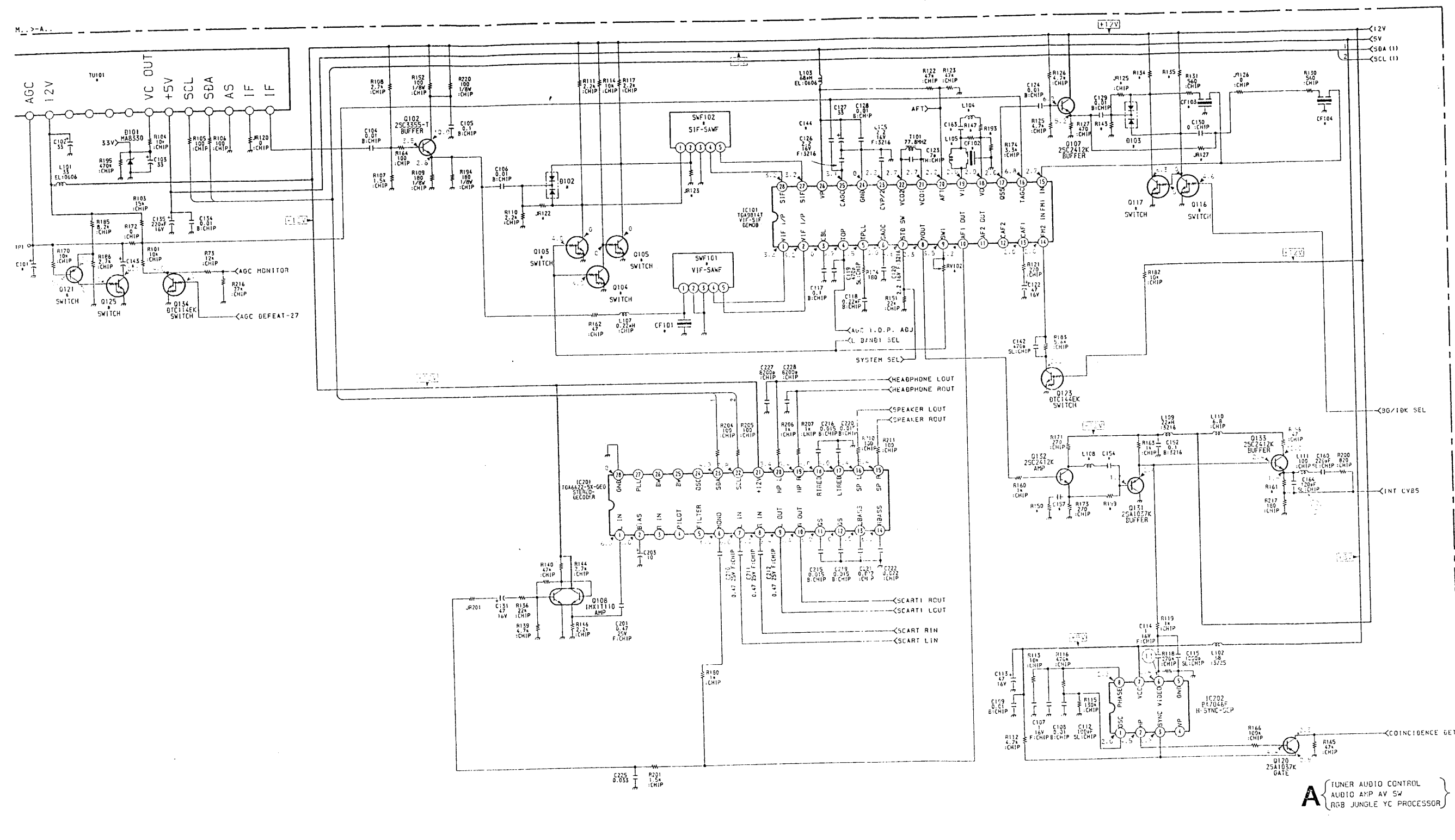
I

J

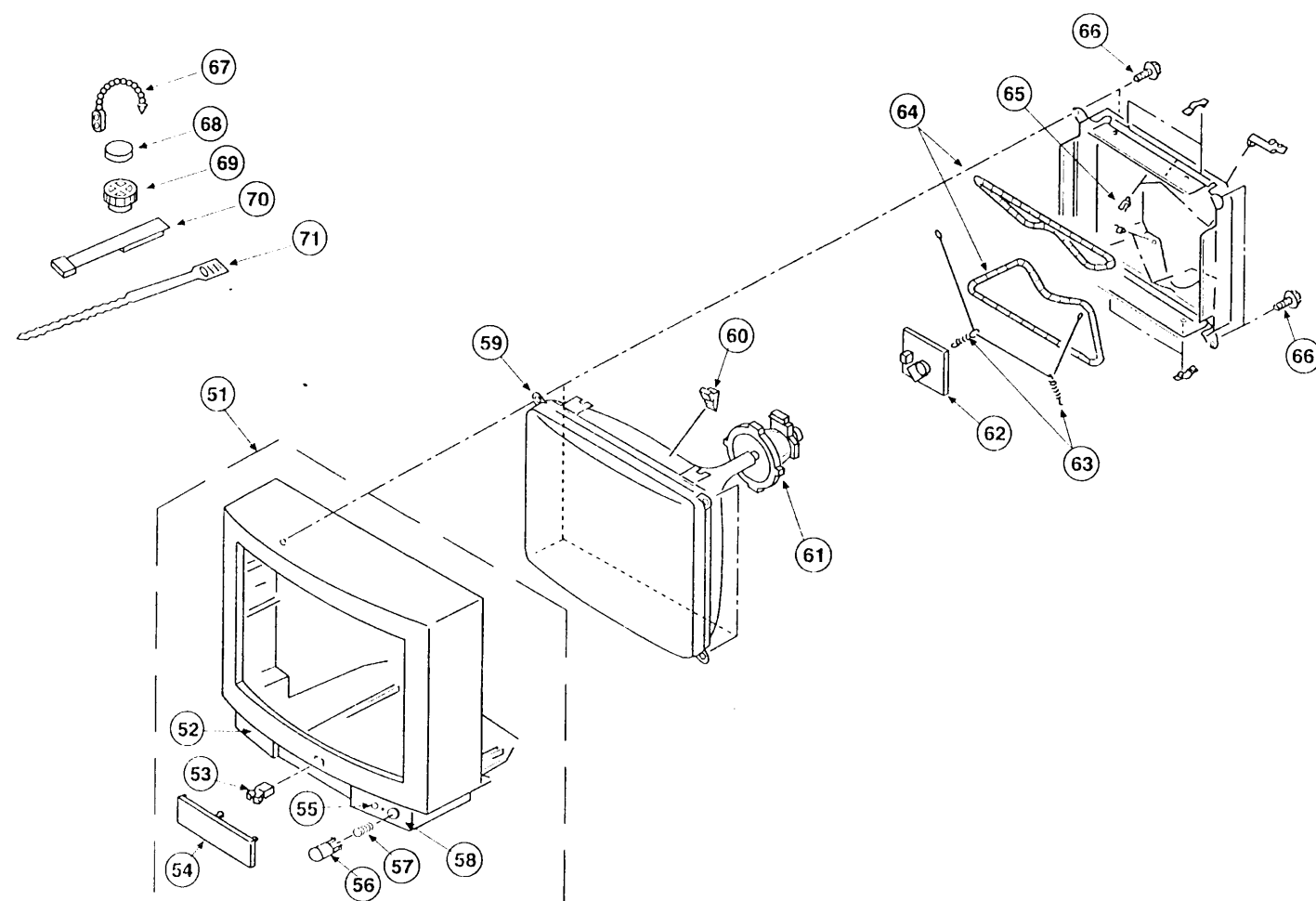


WAVEFORMS C BOARD





6-2. PICTURE TUBE



The components identified by shading and marked * are critical for safety. Replace only with the part number specified.

REF NO	PART NO	DESCRIPTION	REMARK	REF NO	PART NO	DESCRIPTION	REMARK
51	X-4200-172-2	BEZNET ASSY	52-58	62	*A-1638-052-A	C BOARD, COMPLETE	
52	4-202-833-01	FRAME, SPEAKER			(KV-M2541A/M2540B/M2540D/M2541D/		
53	4-392-036-01	CATCHER, PUSH			M2540E/M2541E/M2540K/M2541K)		
54	4-202-831-01	DOOR			*A-1638-045-A	C BOARD, COMPLETE	
55	4-202-830-01	LID			(KV-M2541L/M2541U)		
56	4-202-834-01	BUTTON, POWER		63	4-303-774-11	SPRING, GROUND WIRE	
57	4-329-112-00	SPRING		64	*A-1638-746-11	COIL, DEGAUSSING	
58	4-202-832-21	WINDOW, ORNAMENTAL (KV-M2541A)		65	4-385-916-01	HOLDER (D)	
	4-202-832-01	WINDOW, ORNAMENTAL		66	4-036-188-01	SCREW (M), PT	
		(KV-M2540B/M2540D/M2540E/M2540K)		67	4-308-870-00	CLIP LEAD WIRE	
	4-202-832-11	WINDOW, ORNAMENTAL		68	1-452-032-00	MAGNET, DISK; 10MMØ	
		(KV-M2541D/M2541E/M2541K/M2541L/M2541U)		69	1-452-094-00	MAGNET, ROTABLE DISK; 15MMØ	
59	*A-8-733-231-05	CRT SD-178 (A59JWC61X)		70	X-4387-214-1	PERMALLOY ASSY, CORRECTION	
60	3-704-495-01	SPACER, DY		71	3-701-007-00	BAND, BINDING	
61	*A-8-451-311-34	DEFLECTION YOLK (Y25FXA)					

ELECTRICAL PARTS LIST

SECTION 7

The components identified by shading and marked * are critical for safety. Replace only with the part number specified.

- Items marked " * " are not stocked since they are seldom required for routine service. Some delay should be anticipated when ordering these items.

When indicating parts by reference number, please include the board name.

CAPACITORS
MF : mF, PF : mmF
COILS
MMH : mH, µH : µH

- All variable and adjustable resistors have characteristic curve B, unless otherwise noted.

RESISTORS

- All resistors are in ohms
- F : nonflammable

F1 A

REF.NO.	PART NO.	DESCRIPTION	REMARK	REF.NO.	PART NO.	DESCRIPTION	REMARK
	*1-652-271-11	F1 BOARD	*****	C12	1-164-004-11	CERAMIC CHIP 0.1MF	10% 25V
	< CONNECTOR >			C13	1-126-101-11	ELECT 100MF	20% 16V
CN603	*A-1-580-844-11	PIN, CONNECTOR (POWER)		C15	1-163-105-00	CERAMIC CHIP 33PF	5% 50V
CN604	*A-1-695-292-11	PIN, CONNECTOR (POWER)			(KV-M2541A/M2540B/M2540D/M2541D/M2541L/M2541U)		
	< FUSE >			C16	1-163-809-11	CERAMIC CHIP 0.047MF	10% 25V
F601	*A-1-576-232-21	FUSE (H.B.C.) 5A 250V		C17	1-164-004-11	CERAMIC CHIP 0.1MF	10% 25V
	*A-1-533-230-11	HOLDER, FUSE (F601)					
	< SWITCH >			C18	1-163-117-00	CERAMIC CHIP 100PF	5% 50V
S601	*A-1-571-433-11	SWITCH, PUSH (AC POWER)		C19	1-164-232-11	CERAMIC CHIP 0.01MF	10% 50V
	*****			C21	1-163-037-11	CERAMIC CHIP 0.022MF	10% 25V
				C22	1-164-005-11	CERAMIC CHIP 0.47MF	25V
				C23	1-163-117-00	CERAMIC CHIP 100PF	5% 50V
				C24	1-163-109-00	CERAMIC CHIP 47PF	5% 50V
				C30	1-164-004-11	CERAMIC CHIP 0.1MF	10% 25V
				C101	1-124-916-11	ELECT 22MF	20% 50V
					(KV-M2541A/M2540D/M2541D/M2540E/M2541E/M2540K/		
					M2541K/M2541L/M2541U)		
					1-124-927-11	ELECT 4.7MF	20% 50V
					(KV-M2540B)		
	*A-1632-239-A	A BOARD, COMPLETE (KV-M2541A)	*****	C102	1-124-917-11	ELECT 33MF	20% 50V
	*A-1632-240-A	A BOARD, COMPLETE (KV-M2540B)	*****	C103	1-124-917-11	ELECT 33MF	20% 50V
	*A-1632-236-A	A BOARD, COMPLETE (KV-M2540D)	*****	C104	1-164-232-11	CERAMIC CHIP 0.01MF	10% 50V
	*A-1632-235-A	A BOARD, COMPLETE (KV-M2541D)	*****	C105	1-164-004-11	CERAMIC CHIP 0.1MF	10% 25V
	*A-1632-226-A	A BOARD, COMPLETE (KV-M2540E)	*****	C106	1-164-232-11	CERAMIC CHIP 0.01MF	10% 50V
	*A-1632-202-A	A BOARD, COMPLETE (KV-M2541E)	*****				
	*A-1632-230-A	A BOARD, COMPLETE (KV-M2540K)	*****	C107	1-164-346-11	CERAMIC CHIP 1MF	16V
	*A-1632-229-A	A BOARD, COMPLETE (KV-M2541K)	*****	C108	1-164-232-11	CERAMIC CHIP 0.01MF	10% 50V
	*A-1632-241-A	A BOARD, COMPLETE (KV-M2541L)	*****	C109	1-164-232-11	CERAMIC CHIP 0.01MF	10% 50V
	*A-1632-211-A	A BOARD, COMPLETE (KV-M2541U)	*****	C112	1-163-117-00	CERAMIC CHIP 100PF	5% 50V
				C113	1-124-477-11	ELECT 47MF	20% 16V
TP1	1-508-784-00	PIN, CONNECTOR (5MM PITCH) 1P					
	< CAPACITOR >			C114	1-164-346-11	CERAMIC CHIP 1MF	16V
C1	1-163-009-11	CERAMIC CHIP 0.001MF	10% 50V	C115	1-163-141-00	CERAMIC CHIP 0.001MF	5% 50V
C2	1-163-009-11	CERAMIC CHIP 0.001MF	10% 50V	C117	1-164-004-11	CERAMIC CHIP 0.1MF	10% 25V
C3	1-124-907-11	ELECT 10MF	20% 50V	C118	1-164-489-11	CERAMIC CHIP 0.22MF	10% 16V
C4	1-164-004-11	CERAMIC CHIP 0.1MF	10% 25V	C119	1-163-133-00	CERAMIC CHIP 470PF	5% 50V
C7	1-163-009-11	CERAMIC CHIP 0.001MF	10% 50V				
C8	1-164-232-11	CERAMIC CHIP 0.01MF	10% 50V	C120	1-164-337-11	CERAMIC CHIP 2.2MF	16V
C9	1-163-009-11	CERAMIC CHIP 0.001MF	10% 50V	C122	1-124-477-11	ELECT 47MF	20% 16V
C10	1-163-009-11	CERAMIC CHIP 0.001MF	10% 50V	C123	1-163-090-00	CERAMIC CHIP 7PF	0.25PF 50V
C11	1-163-009-11	CERAMIC CHIP 0.001MF	10% 50V	C124	1-164-232-11	CERAMIC CHIP 0.01MF	10% 50V
				C125	1-164-337-11	CERAMIC CHIP 2.2MF	16V
				C126	1-164-337-11	CERAMIC CHIP 2.2MF	16V
				C127	1-124-917-11	ELECT 33MF	20% 50V
				C128	1-164-232-11	CERAMIC CHIP 0.01MF	10% 50V
				C129	1-164-232-11	CERAMIC CHIP 0.01MF	10% 50V
				C130	1-216-295-91	METAL GLAZE 0	5% 1/10W
				C131	1-124-477-11	ELECT 47MF	20% 16V
				C134	1-164-232-11	CERAMIC CHIP 0.01MF	10% 50V

SECTION 6

EXPLODED VIEWS

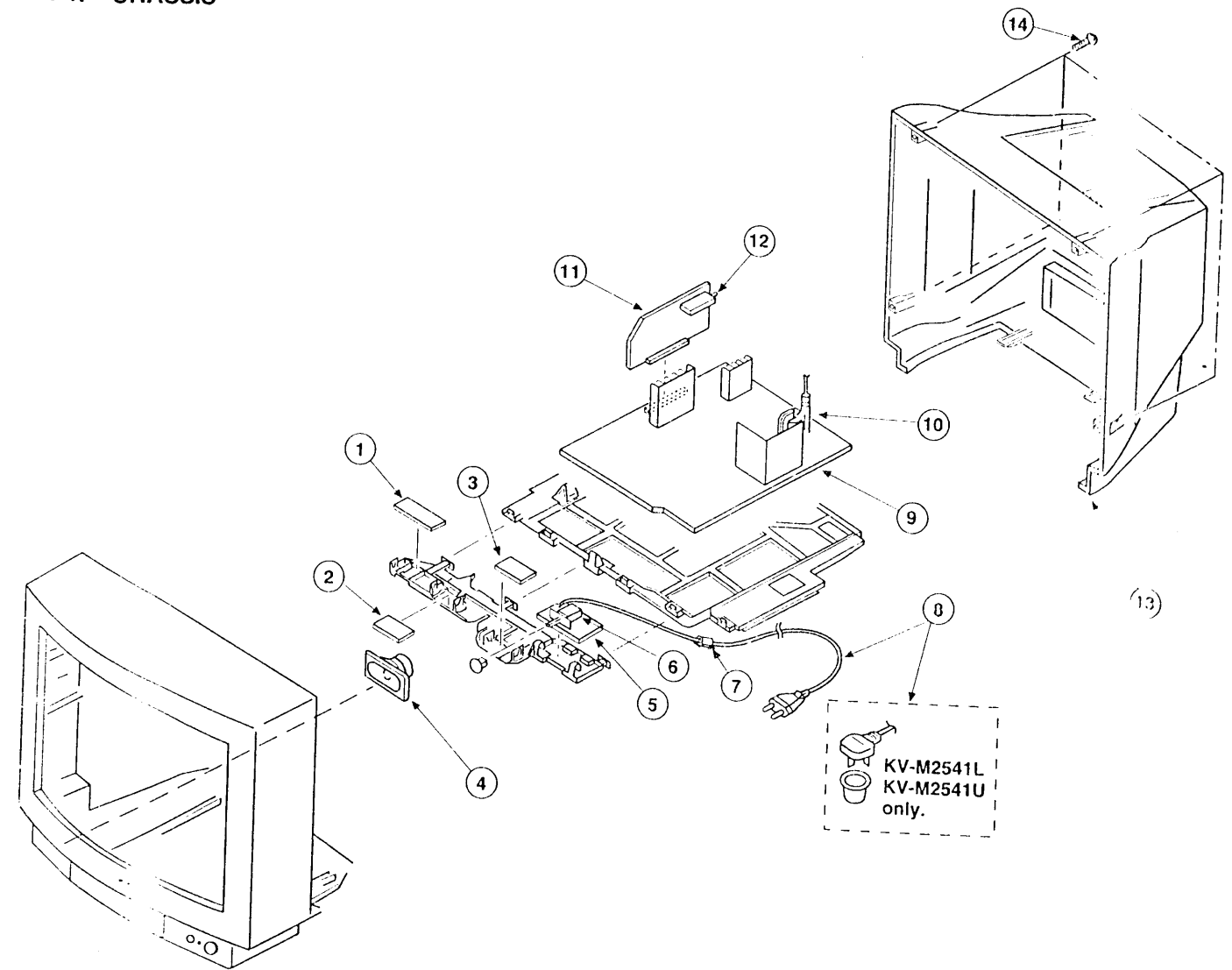
NOTE :

- Items with no part number and no description are not stocked because they are seldom required for routine service.
- The construction parts of an assembled part are indicated with a collation number in the remarks column.

- Items marked " * " are not stocked since they are seldom required for routine service. Some delay should be anticipated when ordering these items.

The components identified by shading and marked * are critical for safety. Replace only with the part number specified.

6-1. CHASSIS

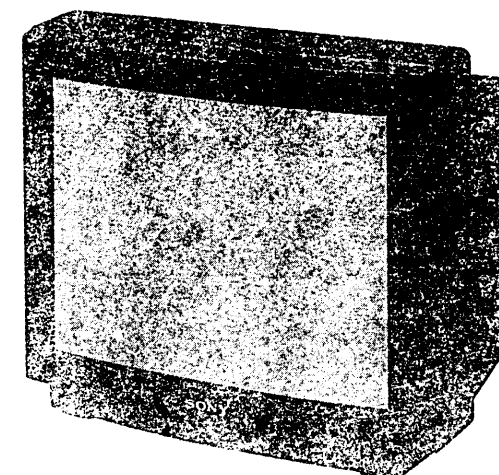


REF NO	PART NO	DESCRIPTION	REMARK	REF NO	PART NO	DESCRIPTION	REMARK
1	*1-552-275-11	H1 BOARD		10	1-453-169-11	FBT ASSY (UX1604A2)	
2	*1-552-270-11	H3 BOARD		11	*A-1632-239-A	A BOARD, COMPLETE (KV-M2541A)	
3	*1-552-269-11	H2 BOARD			*A-1632-240-A	A BOARD, COMPLETE (KV-M2540B)	
4	1-554-698-11	SPEAKER			*A-1632-236-A	A BOARD, COMPLETE (KV-M2540D)	
5	*1-552-271-11	F1 BOARD			*A-1632-235-A	A BOARD, COMPLETE (KV-M2541D)	
6	*1-551-433-11	SWITCH, PUSH (AC POWER)			*A-1632-226-A	A BOARD, COMPLETE (KV-M2540E)	
7	*4-219-201-11	HOLDER, AC CORD			*A-1632-202-A	A BOARD, COMPLETE (KV-M2541E)	
8	*1-551-680-11	CORD, POWER (WITH NOISE FILTER)			*A-1632-230-A	A BOARD, COMPLETE (KV-M2540K)	
		(KV-M2541A/M2540D/M2541D)			*A-1632-229-A	A BOARD, COMPLETE (KV-M2541K)	
	*1-554-460-11	CORD, POWER (WITH CONNECTOR)			*A-1632-241-A	A BOARD, COMPLETE (KV-M2541L)	
		(KV-M2540B/M2540E/M2541E/M2540K/M2541K)			*A-1632-211-A	A BOARD, COMPLETE (KV-M2541U)	
	*1-554-762-11	CORD, POWER (WITH PLUG)		12	1-693-185-11	TUNER (UV916H) (KV-M2540B/M2540D/M2541D/M2540E/M2541E/M2540K/M2541K/M2541L/M2540K/M2541K)	
9	*A-1542-121-A	D BOARD, COMPLETE (KV-M2541A/M2540B/M2540D/M2541D/M2540E/M2541E/M2540K/M2541K)		13	1-693-184-11	TUNER (U944C) (KV-M2541L/M2541U)	
	*A-1542-134-A	D BOARD, COMPLETE (KV-M2541L/M2541U)		14	4-202-835-01	COVER, REAR	
					4-039-358-01	SCREW (4x16), (+) EV	

KV-X2141D/X2541D/X2941D

RM-816

SERVICE MANUAL



AEP Model

KV-X2141D
Chassis No. SCC- F07M-A
KV-X2541D
Chassis No. SCC- F07N-A
KV-X2941D
Chassis No. SCC- F07L-A



AE-1C CHASSIS

MODELS OF THE SAME SERIES	
KV-M2531D	KV-E2521D/E2921D
KV-M2521D	KV-A2911D
KV-A2111D/A2511D	KV-C2121D

[KV-X2141D/X2541D/X2941D]

SPECIFICATIONS

Television system. B/G/H
Colour system. PAL/SECAM,NTSC3.58,NTSC4.43
Stereo system. GERMAN stereo.
Channel coverage. VHF: E2-E12 UHF: E21-E69
CABLE TV (1) : S1-S41
CABLE TV (2) : S01-S05, M1-M10,
U1-U10.
Picture tube. Hi-Black Trinitron tube
Approx. 55 cm [21 inch]
(Approx. 51 cm picture measured
diagonally)
100°-degree deflection
Approx. 63 cm [25 inch]
(Approx. 59 cm picture measured
diagonally)
110°-degree deflection
Approx. 72 cm [29 inch]
(Approx. 68 cm picture measured
diagonally)
110°-degree deflection
Rear Input/Output
Sockets : ② 1/21-pin Euro connector:
(CENELEC standard) inputs for Audio/
Video signals and RGB.
Outputs for Audio and Video signals.
② ② 21-pin Euro connector: inputs
Audio / Video and S-Video signals.
② Audio output (variable) - phono jacks

Front Input/Output
Sockets. ② Video input - phono jack.
② Audio inputs - (L,R) phono jacks.
② S-Video input - 4pin DIN.
Headphone jack output : stereo mini jack.
Sound output. 15W+15W (Music)
Power consumption. 87Wh (KV-X2141D)
101Wh (KV-X2541D)
109Wh (KV-X2941D)
Dimensions. Approx. 513 x 438 x 474mm (w/h/d) 21inch
Approx. 575 x 489 x 480mm (w/h/d) 25inch
Approx. 656 x 554 x 512mm (w/h/d) 29inch
Weight. Approx. 25.5kg 21inch
Approx. 35kg 25 inch
Approx. 52kg 29inch
Supplied accessories. RM-816 Remote Commander (1)
IEC designation R6 batteries (2)

[RM-816]

Remote control system infrared control
Power requirements. 3V dc
2 batteries IEC designation
R6 (size AA)
Dimensions. Approx. 75 x 221 x 23mm (w/h/d)
Weight. Approx. 230g (including batteries).

Design and specifications are subject to change without notice.

Sony Corporation
TV Group

9-974-808-01

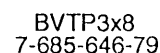
English
93AR7148-1
Printed in U.K.
© 1993.1



TRINITRON® COLOR TV
SONY®

SECTION 7

ELECTRICAL PARTS LIST



REF NO	PART NO	DESCRIPTION	REMARK	REF NO	PART NO	DESCRIPTION	REMARK
51	4-398-911-41	DOOR, CONTROL		63	*1-1638-013-A	C BOARD, COMPLETE	
52	X-4398-902-3	CABINET ASSY (WITH BEZEL ASSY)	53-57	64	*4-379-167-01	COVER (MAIN), CV	
53	4-392-036-01	CATCHER, PUSH		65	*4-379-160-01	COVER (REAR LID), CV	
54	3-703-035-11	SHAFT, LID		66	4-369-318-00	SPRING, TENSION	
55	4-200-148-01	WINDOW, ORNAMENTAL		67	Δ 1-426-398-11	COIL, DEMAGNETIZATION	
56	4-200-150-11	BUTTON, POWER		69	*4-387-284-01	HOLDER, LEAD	
57	4-329-112-21	SPRING		70	4-036-188-01	SCREW (M), PT	
58	Δ 8-733-831-05	PICTURE TUBE (A68JYKL61X)		71	4-308-870-00	CLIP, LEAD WIRE	
59	3-704-495-01	SPACER, DY		72	1-452-032-00	MAGNET, DISK; 10MM	
60	Δ 1-451-313-21	DEFLECTION YOKE (Y29FXA)		73	1-452-094-00	MAGNET, ROTATABLE DISK; 15MM	
61	Δ 1-452-509-41	NECK ASSY, PICTURE TUBE (NA-308)		74	X-4603-312-0	PERMALLOY ASSY	
62	*1-634-193-11	M BOARD		75	3-701-007-00	BAND. BINDING	

When indicating parts by reference number, please include the board name.

CAPACITORS	COILS
MF : μF , PF : $\mu\mu\text{F}$	MMH : mH, UH : μH

- All resistors are in ohms
- F : nonflammable

[illegible]

SECTION 6
EXPLODED VIEWS

NOTE :

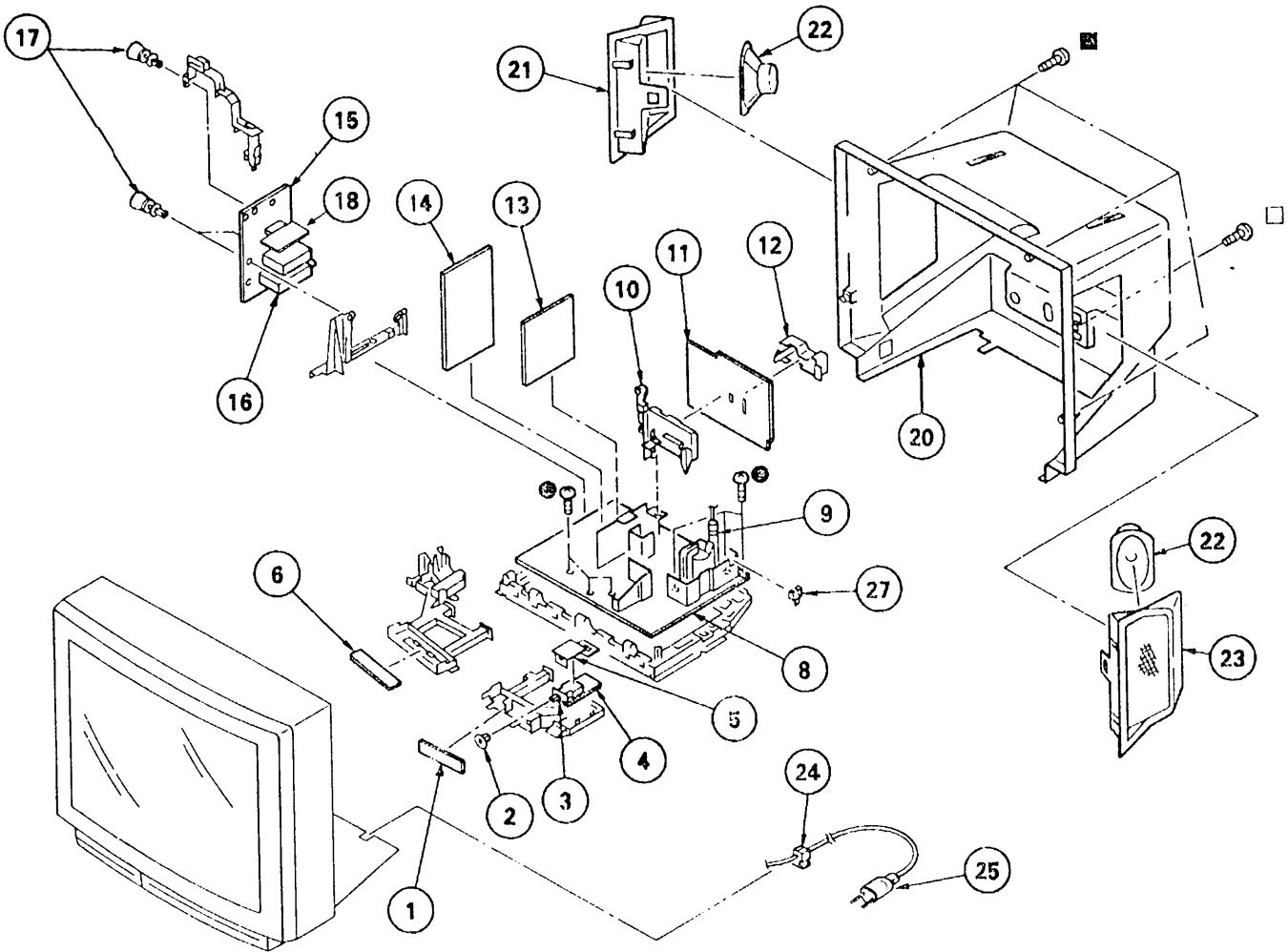
- Items with no part number and no description are not stocked because they are seldom required for routine service.
- The construction parts of an assembled part are indicated with a collation number in the remarks column.

Items marked " * " are not stocked since they are seldom required for routine service. Some delay should be anticipated when ordering these items.

The components identified by shading and marked Δ are critical for safety.
Replace only with part number specified.

6-1. CHASSIS

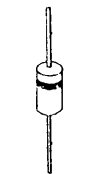
- : BVTP3 x 12 7-685-648-79
- : BVTP4 x 16 7-658-663-79
- : BVYP4 x 20 7-658-664-79



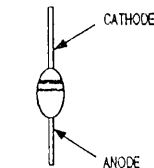
MA3036-H
MA3056-M
MA3068-M
RD3.6M-B2
RD5.6M-B2
RD6.8M-B2



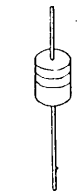
ERC06-15S
ERC25-06S
RGP10G
RU-3AM
EL-1Z
ERD28-08S
RGP02-17
ERD29-08J



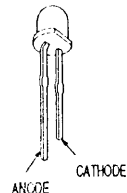
GP08D



MTZJ-11C
MTZJ-12C
MTZJ-4.7B
MTZJ-5.6B
MTZJ-5.6C
MTZJ-6.2B
MTZJ-6.8C
MTZJ-7.5C
MTZJ-9.1C
MTZJ-15A
MTZJ-3.9B
MTZJ-33A
MTZJ-36D
RD11ES-B3
RD12ES-B2
RD5.6ES-B2
RD6.8ES-B2
RD7.5ES-B2
RD9.1ES-B2
UZ-4.7BSC
ISS119
ISS133

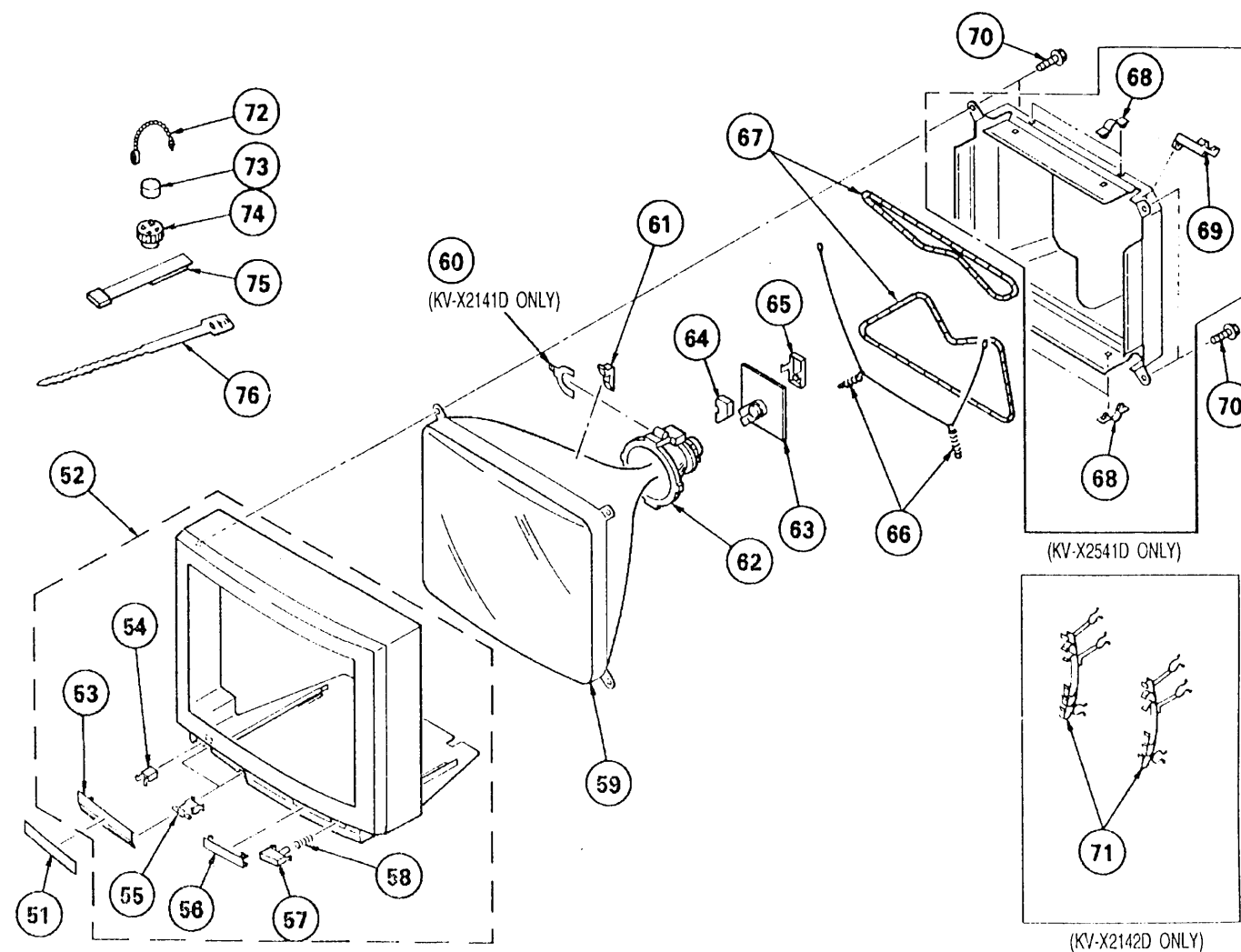


LD-201VR



REF NO	PART NO	DESCRIPTION	REMARK	REF NO	PART NO	DESCRIPTION	REMARK
1	*1-638-392-11	H2 BOARD		14	A-1621-046-A	B BOARD, COMPLETE	
2	4-386-611-01	COVER, SWITCH		15	A-1632-022-A	A BOARD, COMPLETE	
3	Δ 1-571-433-12	SWITCH, PUSH (AC POWER)		16	1-465-301-11	TUNER (UV-816)	
4	*1-638-390-11	F BOARD		17	4-386-618-01	RIVET, T TYPE	
5	4-200-274-01	COVER, POWER SWITCH		18	A-1654-004-A	IFG BOARD, COMPLETE	(KV-X2141D)
6	*1-638-391-11	H1 BOARD		20	4-200-158-21	COVER, REAR	(KV-X2541D)
8	A-1642-035-A	D BOARD, COMPLETE	(KV-X2141D)	21	X-4200-025-6	BAFFLE (L) ASSY, BOARD	
	A-1642-031-A	D BOARD, COMPLETE	(KV-X2541D)	22	1-544-525-11	SPEAKER	
9	Δ 1-439-416-51	TRANSFORMER ASSY, FLYBACK (UX-1650)		23	X-4200-026-5	BAFFLE (R) ASSY, BOARD	
10	*4-386-624-11	BRACKET, J		24	Δ 4-389-201-03	HOLDER, AC CORD	
11	A-1651-018-A	J1 BOARD, COMPLETE		25	Δ 1-590-501-11	CORD, POWER (WITH NOISE FILTER)	
12	4-200-014-01	BRACKET, TERMINAL		27	*3-646-071-00	HOLDER, WIRE	
13	A-1645-013-A	V BOARD, COMPLETE					

6-2. PICTURE TUBE (KV-X2141D / KV-X2541D ONLY)



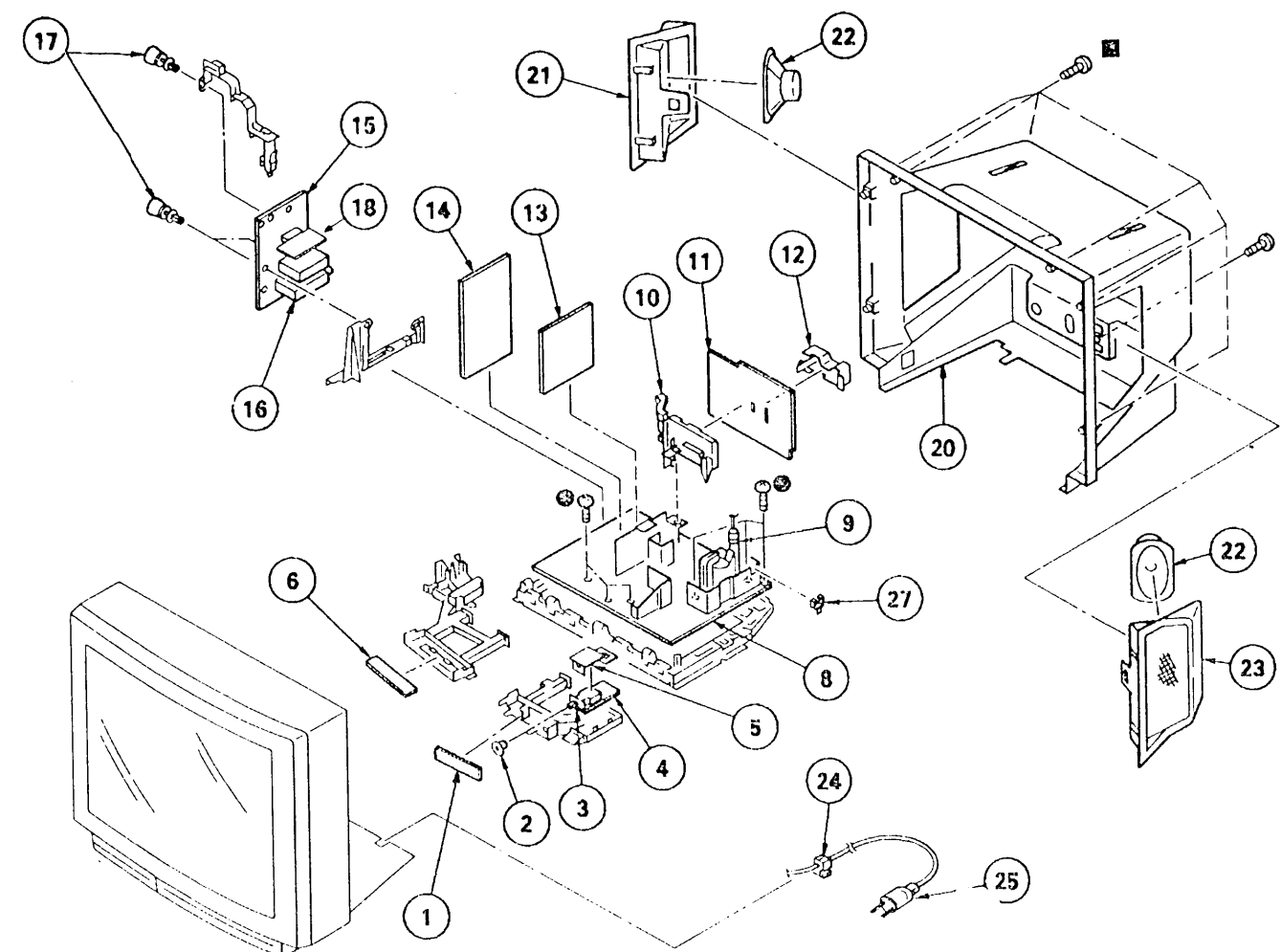
The components identified by shading and marked Δ are critical for safety.
Replace only with part number specified.

REF NO	PART NO	DESCRIPTION	REMARK	REF NO	PART NO	DESCRIPTION	REMARK
51	4-200-162-31	COVER, DOOR		63	*A-1638-014-A	C BOARD, COMPLETE	(KV-X2141D)
52	X-4200-027-8	CABINET ASSY (WITH BEZEL ASSY)	53-58 (KV-X2141D)		*A-1638-011-A	C BOARD, COMPLETE	(KV-X2541D)
	X-4200-121-1	CABINET ASSY (WITH BEZEL ASSY)	53-58 (KV-X2541D)	64	*4-379-167-01	COVER (MAIN), CV	
53	4-200-159-11	DOOR		65	*4-379-160-01	COVER (REAR LID), CV	
54	4-392-036-01	CATCHER, PUSH		66	4-303-774-21	SPRING	(KV-X2141D)
55	3-703-035-11	SHAFT, LID		67	Δ 1-426-383-11	COIL, DEMAGNETIZATION	(KV-X2541D)
56	4-200-148-01	WINDOW, ORNAMENTAL			Δ 1-460-091-11	COIL, DEGAUSS	(KV-X2541D)
57	4-200-150-11	BUTTON, POWER		68	*4-385-916-01	HOLDER (D)	(KV-X2541D)
58	4-329-112-51	SPRING		69	*4-387-284-01	HOLDER, LEAD	(KV-X2541D)
59	Δ 8-738-758-05	PICTURE TUBE (A51JXH61X)	(KV-X2141D)	70	4-036-189-01	SCREW (S), PT	(KV-X2141D)
	Δ 8-733-231-05	PICTURE TUBE (A59JWC61X)	(KV-X2541D)		4-036-188-01	SCREW (M), PT	(KV-X2541D)
60	1-452-277-00	MAGNET, BMC	(KV-X2141D)	71	*4-386-622-01	BAND, DGC	(KV-X2141D)
61	3-704-495-01	SPACER, DY		72	4-308-870-00	CLIP, LEAD WIRE	
62	Δ 1-451-295-11	DEFLECTION YOKE (Y21PFA2)	(KV-X2141D)	73	1-452-032-00	MAGNET, DISK; 10MM	
	Δ 1-451-311-21	DEFLECTION YOKE (Y25FXA)	(KV-X2541D)	74	1-452-094-00	MAGNET, ROTATABLE DISK; 15MM	
				75	X-4309-608-0	PERMALLOY ASSY, CONVERGENCE	(KV-X2141D)
					X-4387-214-1	PERMALLOY ASSY, CORRECTION	(KV-X2541D)
				76	3-701-007-00	BAND, BINDING	

6-3. CHASSIS (KV-X2941D ONLY)

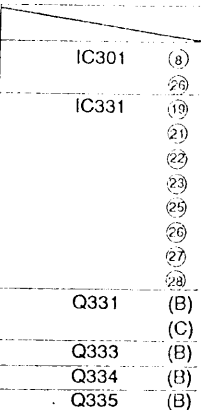
: BVTP3 x 12 7-685-648-79

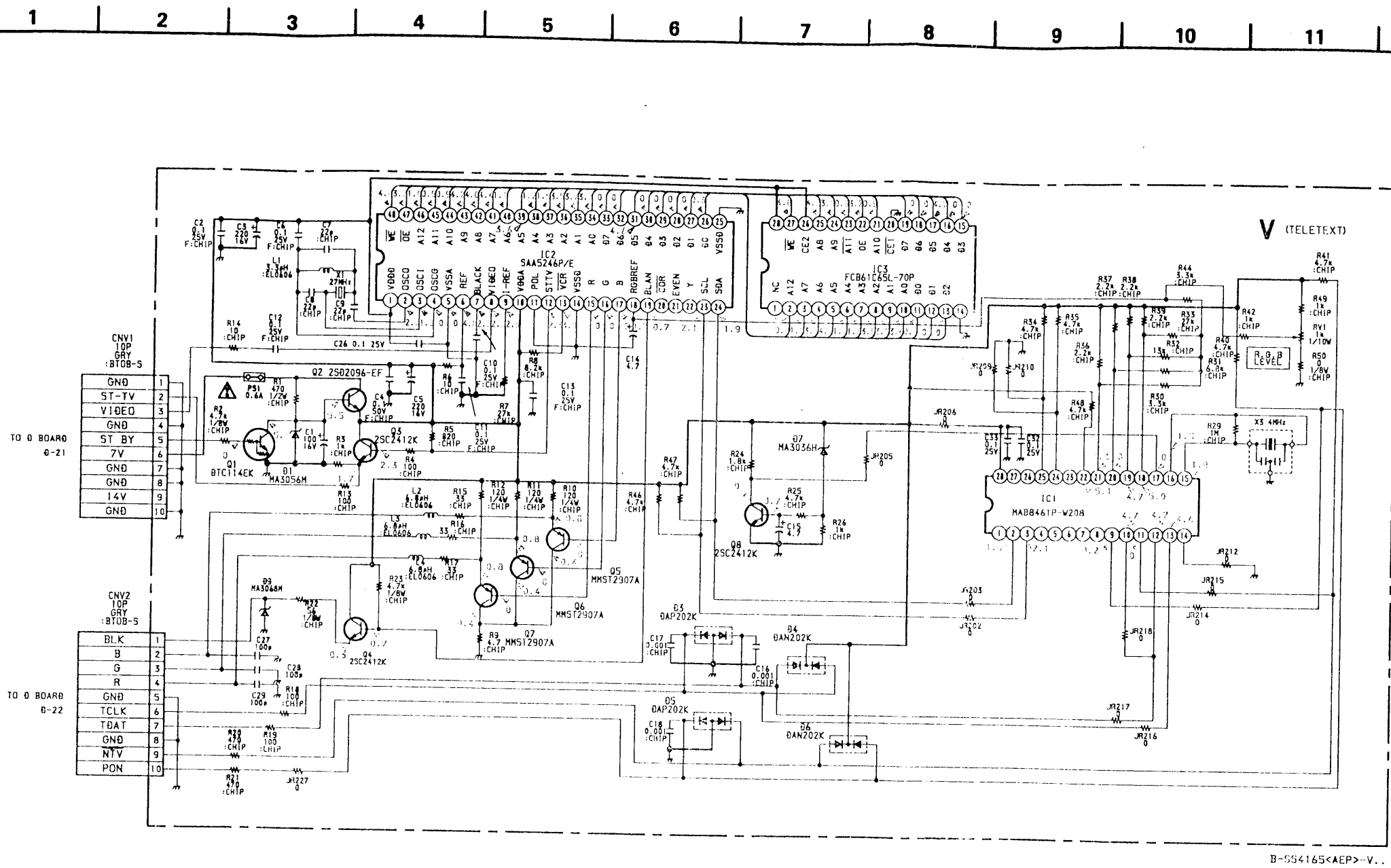
: BVTP4 x 16 7-658-663-79



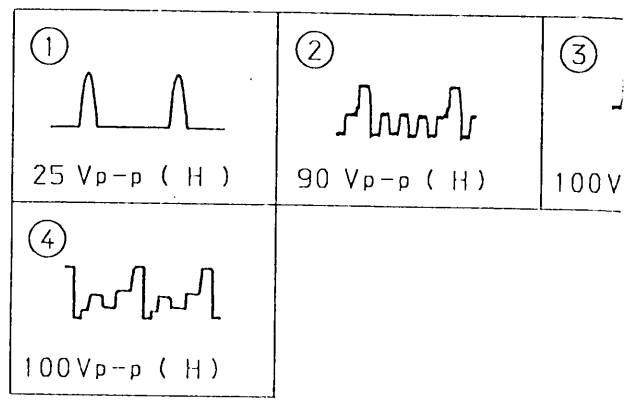
The components identified by shading and marked Δ are critical for safety.
Replace only with part number specified.

REF NO	PART NO	DESCRIPTION	REMARK	REF NO	PART NO	DESCRIPTION	REMARK
1	*1-638-392-11	H2 BOARD		14	A-1621-040-A	B BOARD, COMPLETE	
2	4-386-611-01	COVER, SWITCH		15	A-1632-094-A	A BOARD, COMPLETE	
3	Δ 1-571-433-12	SWITCH, PUSH (AC POWER)		16	1-465-301-11	TUNER (UV-816)	
4	*1-638-390-11	F BOARD		17	4-386-618-01	RIVET, T TYPE	
5	4-200-274-01	COVER, POWER SWITCH		18	A-1654-008-A	IFG BOARD COMPLETE	
6	*1-638-391-11	H1 BOARD		20	4-398-910-11	COVER, REAR	
8	A-1642-032-A	D BOARD, COMPLETE		21	X-4398-901-2	BOARD ASSY, BAFFLE	
9	Δ 1-439-416-51	TRANSFORMER ASSY, FLYBACK (UX-1650)		22	1-544-525-11	SPEAKER	
10	*4-386-624-11	BRACKET, J		23	Δ 4-389-201-01	HOLDER, AC CORD	
11	A-1651-038-A	J1 BOARD, COMPLETE		24	Δ 1-590-501-11	CORD, POWER (WITH NOISE FILTER)	
12	4-200-014-01	BRACKET, TERMINAL		26	*3-646-071-00	HOLDER, WIRE	
13	A-1645-013-A	V BOARD, COMPLETE					





Waveform C Board

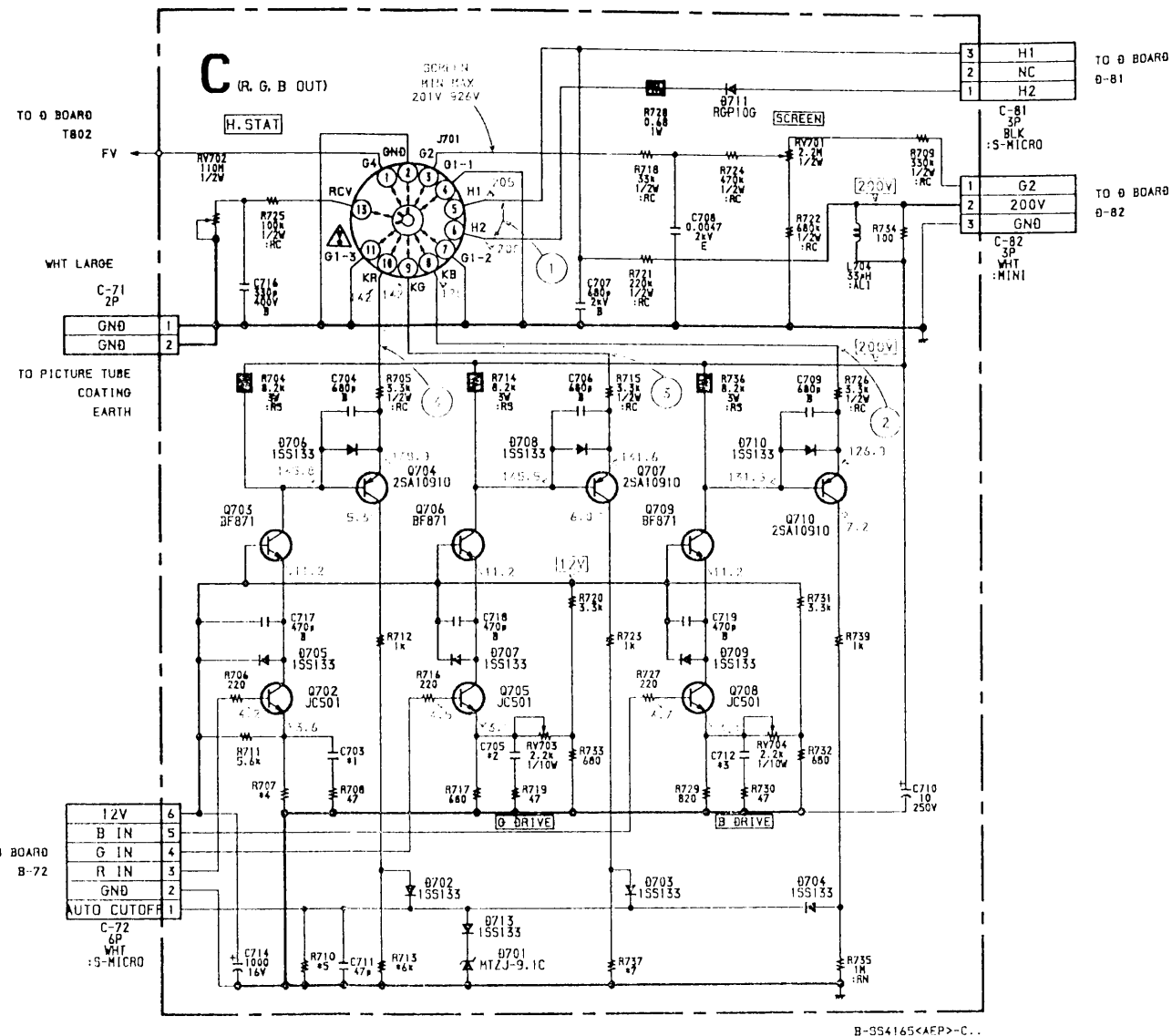


C Board
* Mark List

		21 inch	25 inch
*1	C703	270pF	270pF
*2	C705	180pF	220pF
*3	C712	270pF	270pF
*4	R707	430	390
*5	R710	100K	68K
*6	R713	160K	120K
*7	R737	390K	820K

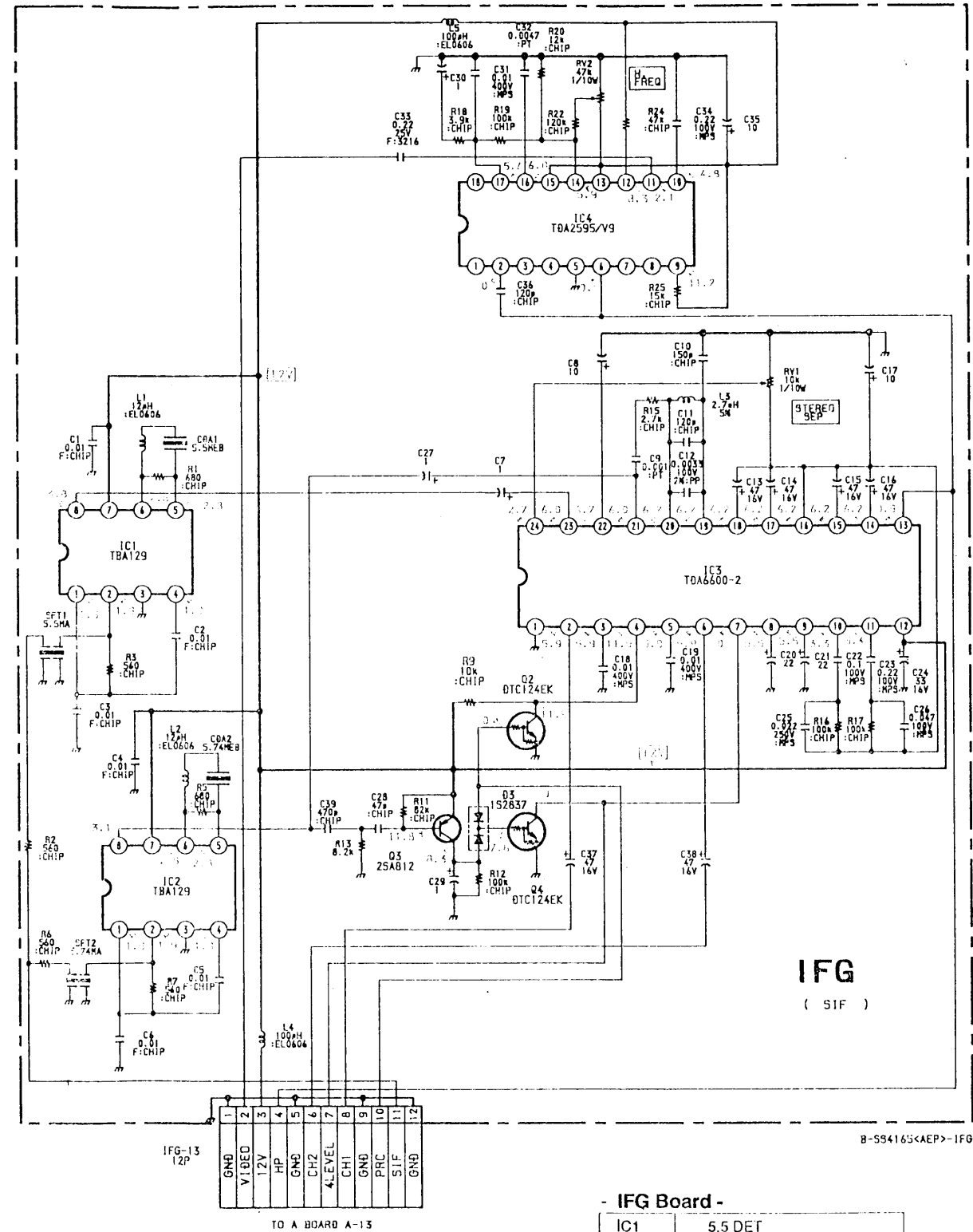
V Board

IC1	MICRO-CONT
IC2	IVT
IC3	STATIC-RAM
Q1	STAND-BY
Q2	5V REG
Q3	SYNC BUFFER
Q4	BLK OUT
Q5	B OUT
Q6	G OUT
Q7	R OUT
Q8	RESET
D1	5V REG
D3	PROTECT
D4	PROTECT
D5	PROTECT
D6	PROTECT
D7	PROTECT
D9	PROTECT



C Board

Q702	R DRIVE
Q703	R OUT
Q704	ACO MEASURING
Q705	G DRIVE
Q706	G OUT
Q707	ACO MEASURING
Q708	B DRIVE
Q709	B OUT
Q710	ACO MEASURING
D701	PROTECT
D702	PROTECT
D703	PROTECT
D704	PROTECT
D705	PROTECT
D706	PROTECT
D707	PROTECT
D708	PROTECT
D709	PROTECT
D710	PROTECT
D711	HEATER VOLTAGE REC
D713	PROTECT

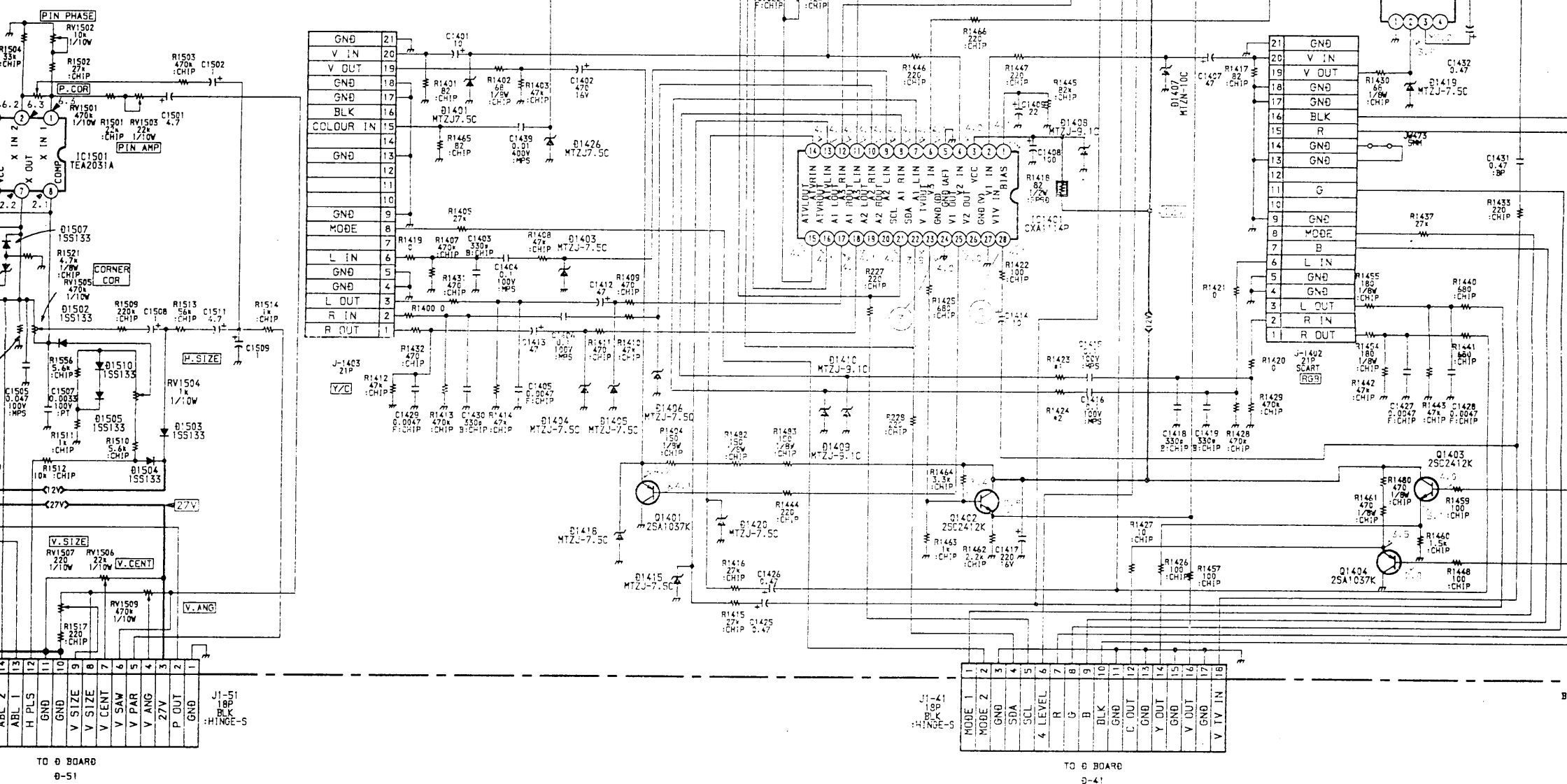


- IFG Board -

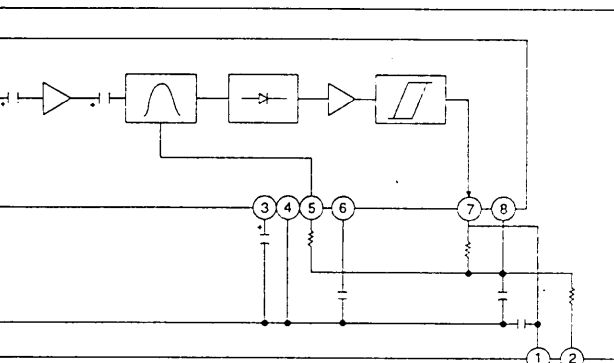
IC1	5.5 DET
IC2	SIF DET AMP
IC3	H FREQ AMP
IC4	HORIZ COMBINATION
Q2	SW
Q3	SW
Q4	SW
Q5	SW

25 inch	29 inch
0.022/250V	
820P	
0.0068/400V	
680K	
470K	390K
15MM JW	1 1W

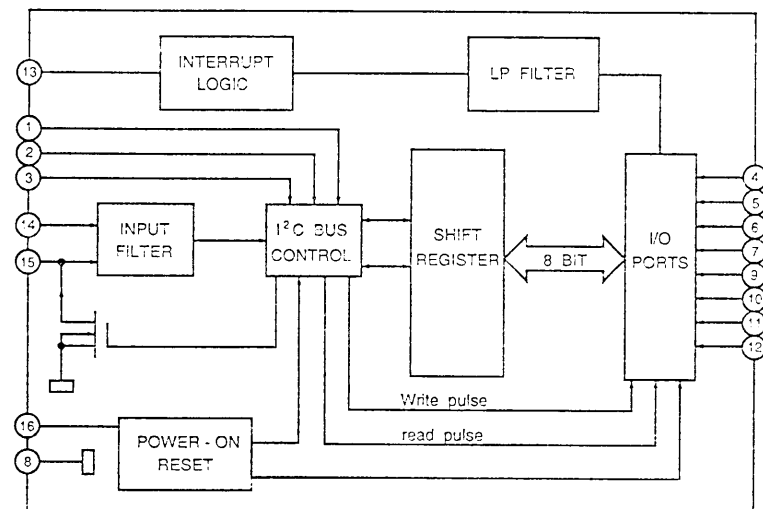
NOT MOUNTED



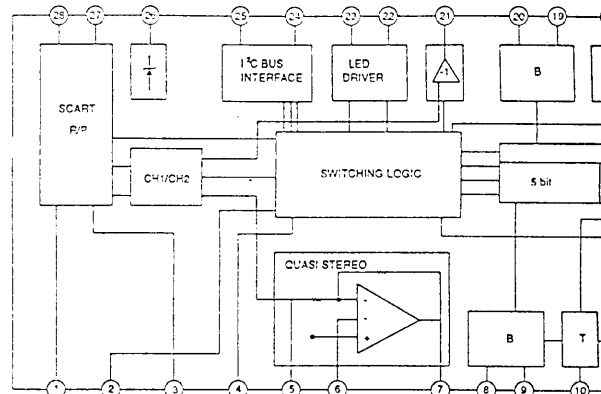
X1610-11



A Board IC103 PCF8574

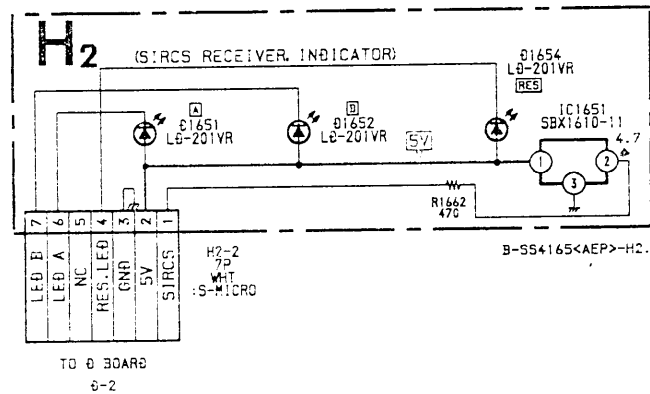
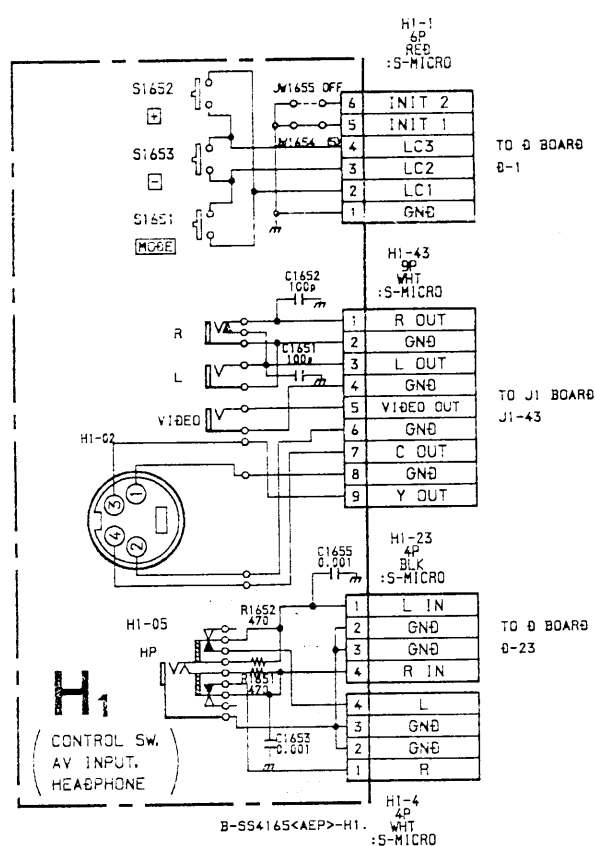
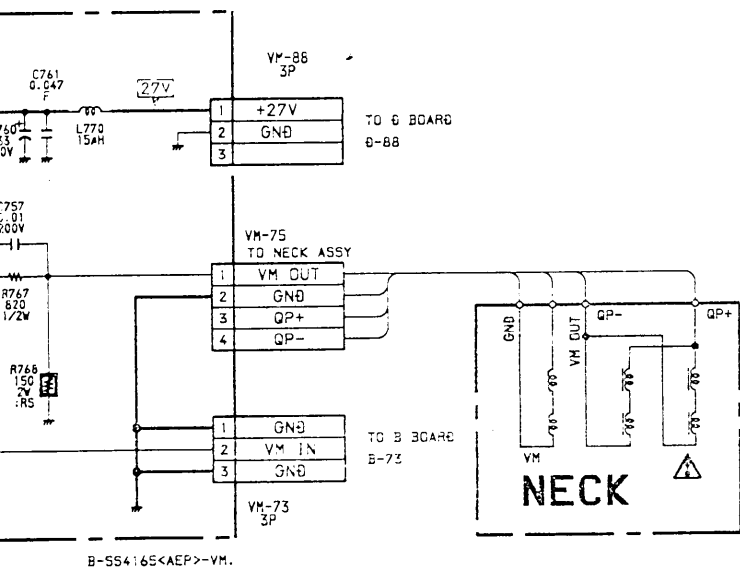


J1 Board IC201 TDA6200



IC103	EXPANDER
Q113	AUDIO AMP
Q114	AUDIO AMP
Q115	AUDIO AMP
Q116	AUDIO AMP
Q125	MUTE SW
Q126	MUTE SW
Q181	BUFFER

TO O BOARD
O-62



IC1651	INFRARED RECEIVER
D1651	AUDIO CHANNEL A INDICATOR
D1652	AUDIO CHANNEL B INDICATOR
D1654	RESET

