

# JVC

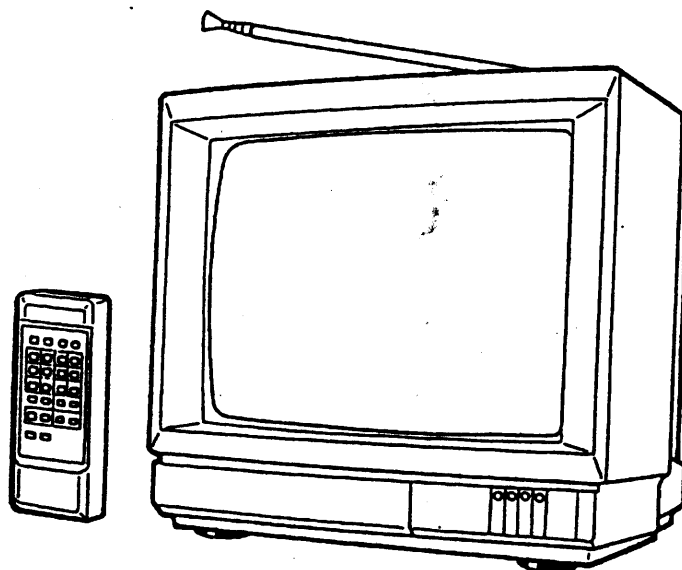
## SERVICE MANUAL

14" (36cm) COLOUR TV

### C-1490M-B

BASIC CHASSIS

**BX II**

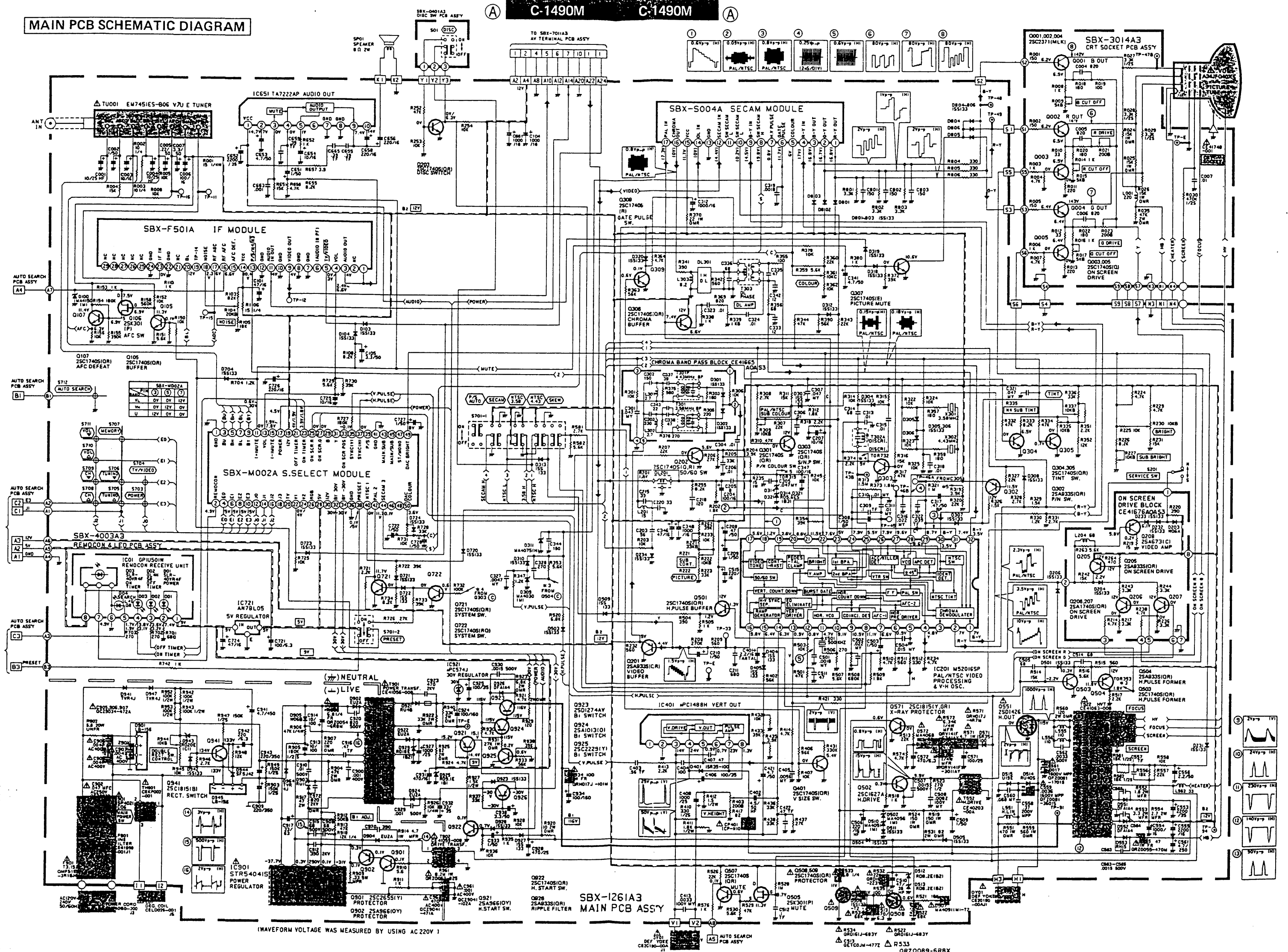


## CONTENTS

■ SPECIFICATIONS .....	2
■ SAFETY PRECAUTIONS .....	3
■ FEATURES .....	4
■ FUNCTIONS .....	4
■ TECHNICAL INFORMATION .....	6
■ SPECIFIC SERVICE INSTRUCTIONS .....	7
■ SERVICE ADJUSTMENT .....	9
■ PARTS LIST .....	15
★ SCHEMATIC DIAGRAM (APPENDED) .....	①~⑫

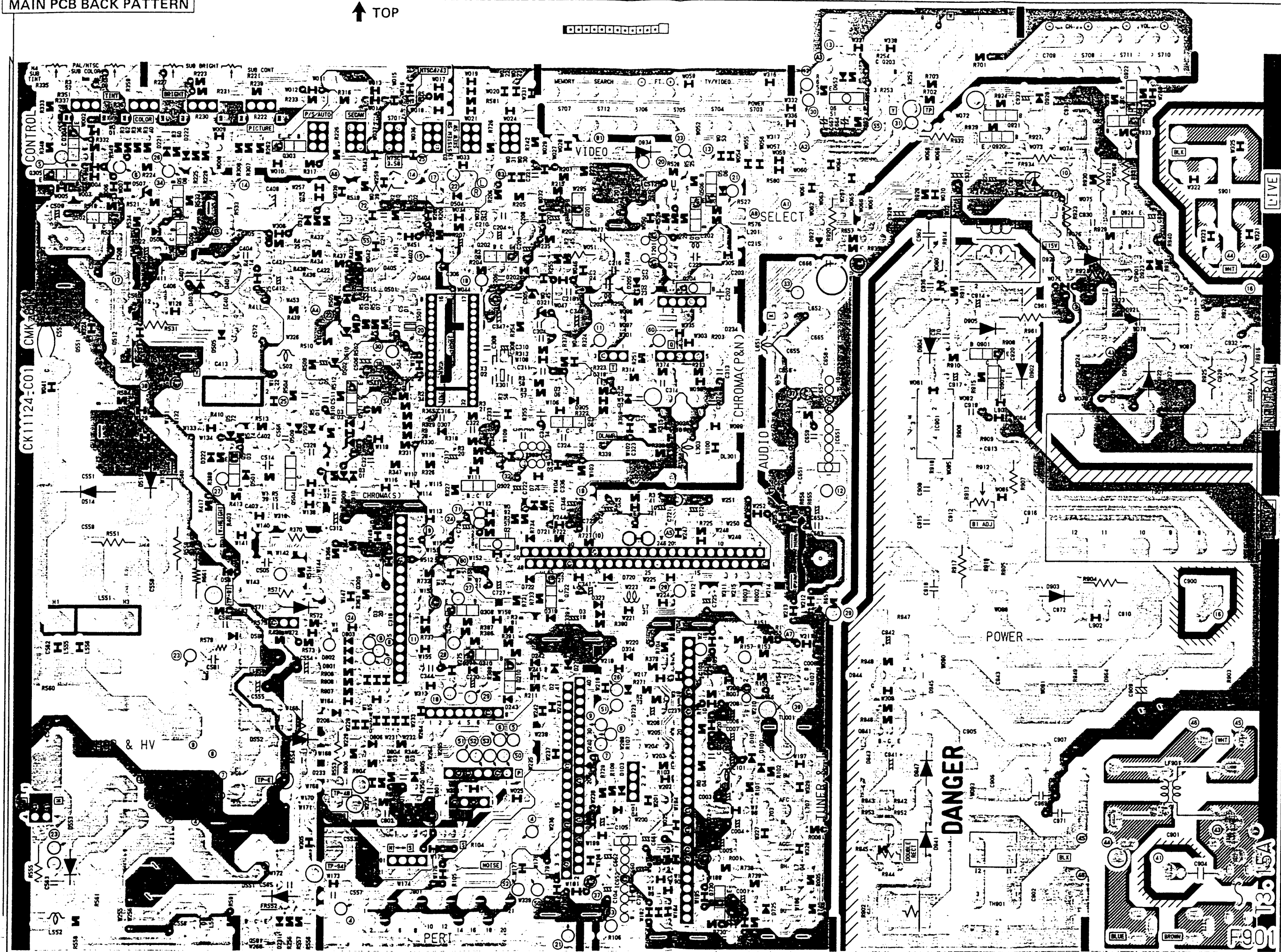
# MAIN PCB SCHEMATIC DIAGRAM

C-1490M C-1490M

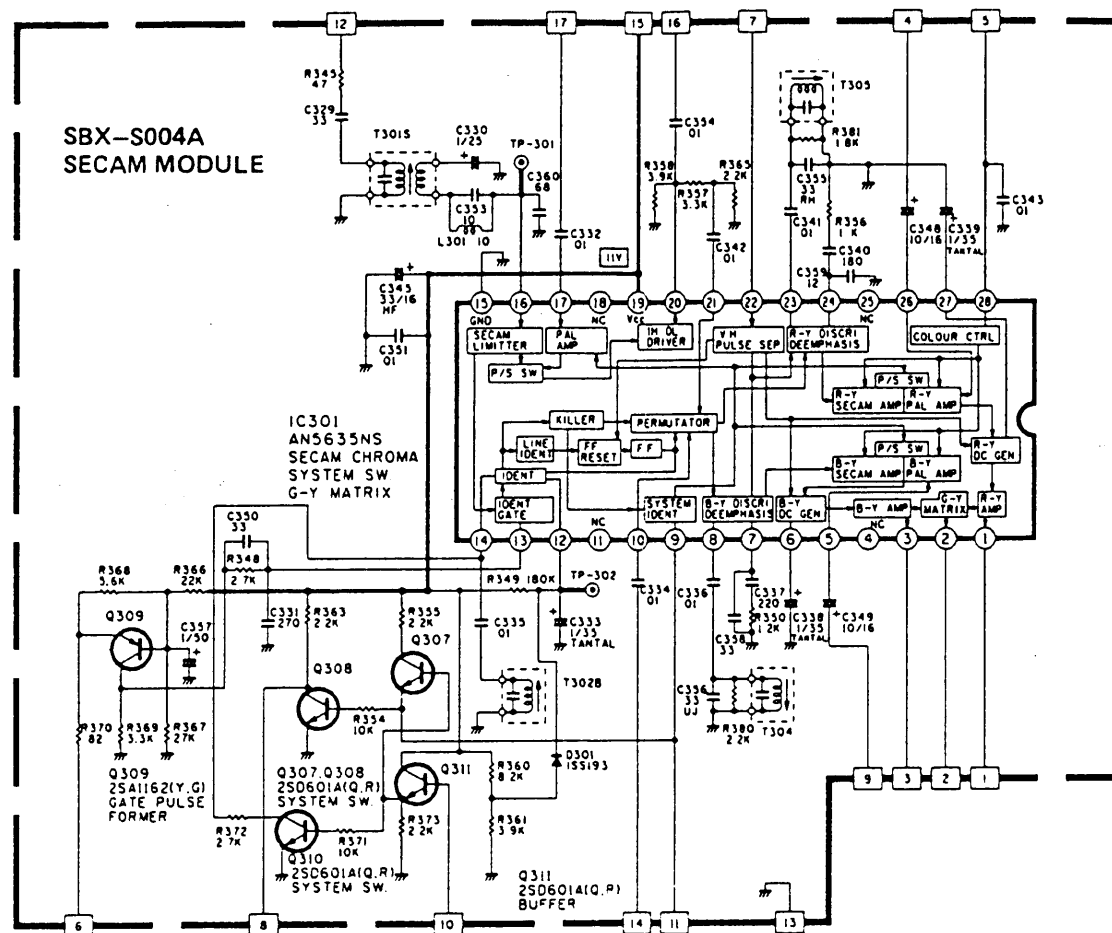


↑ TOP

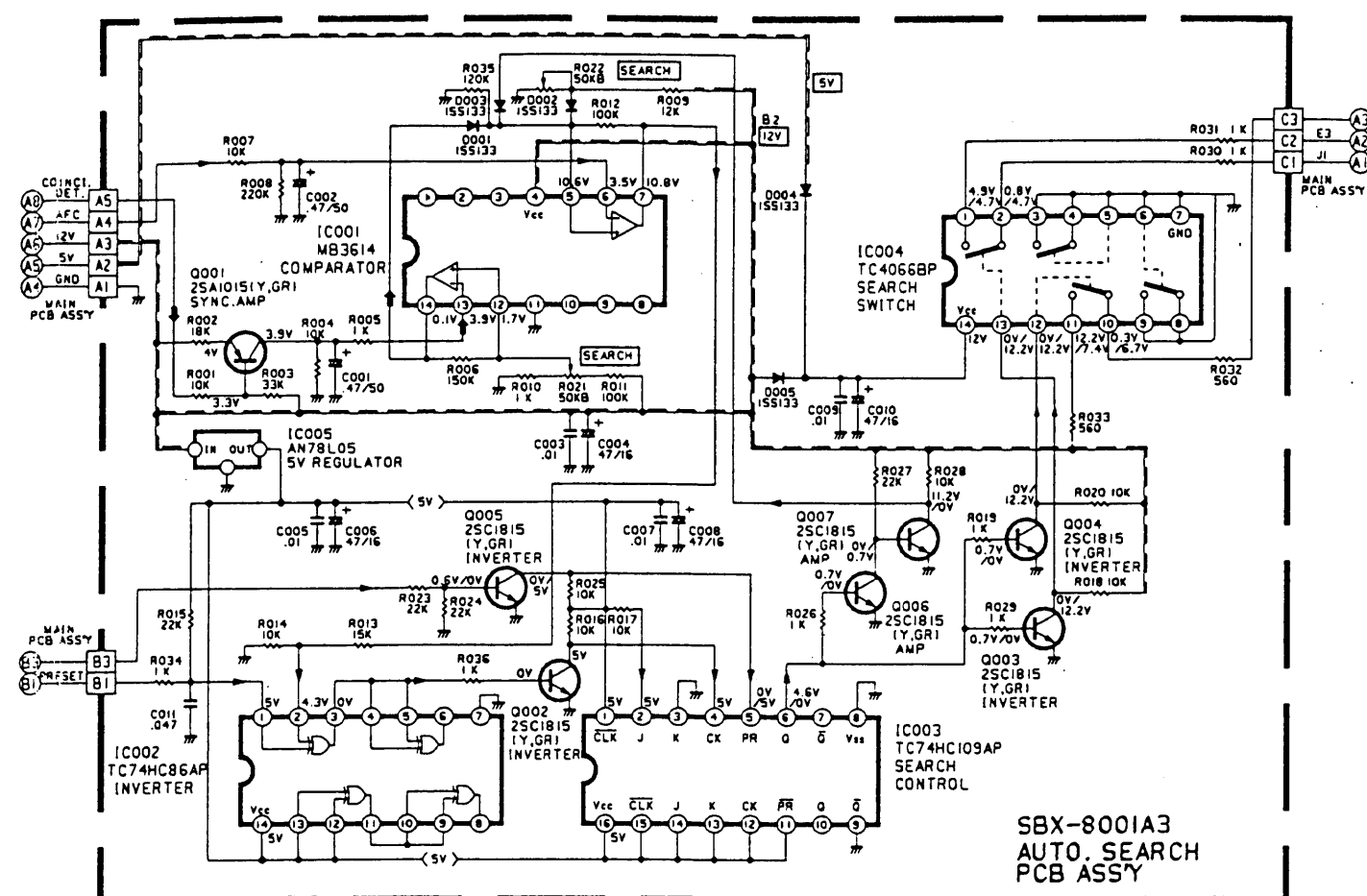
XXXXXXXXXXXX



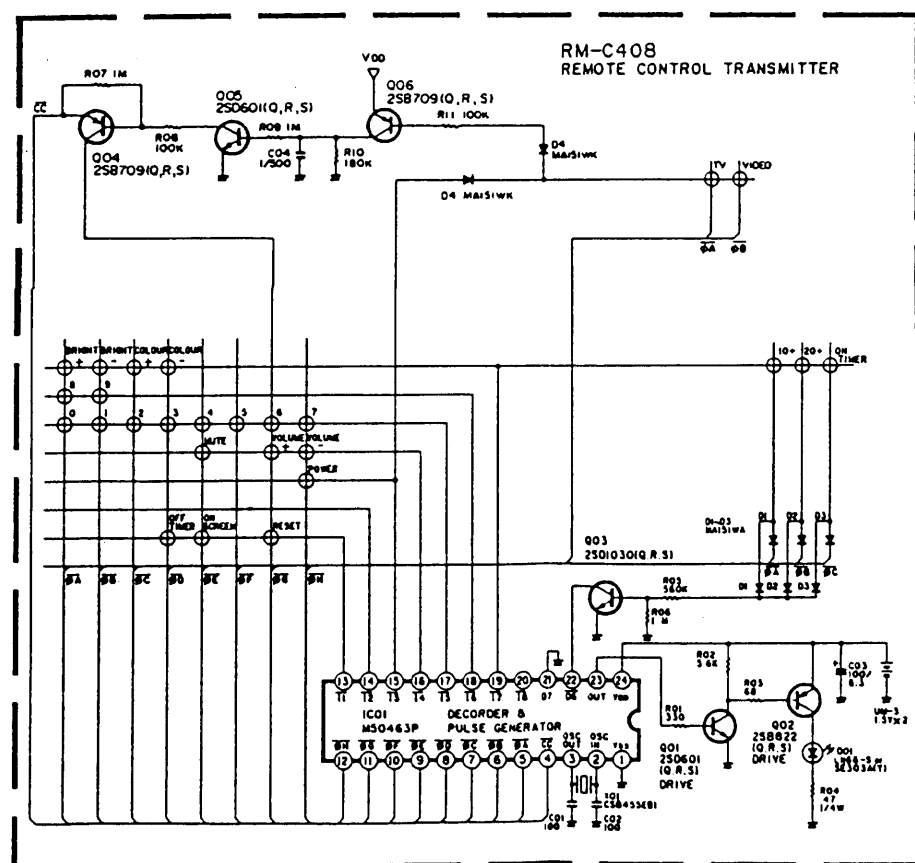
# SECAM MODULE SCHEMATIC DIAGRAM



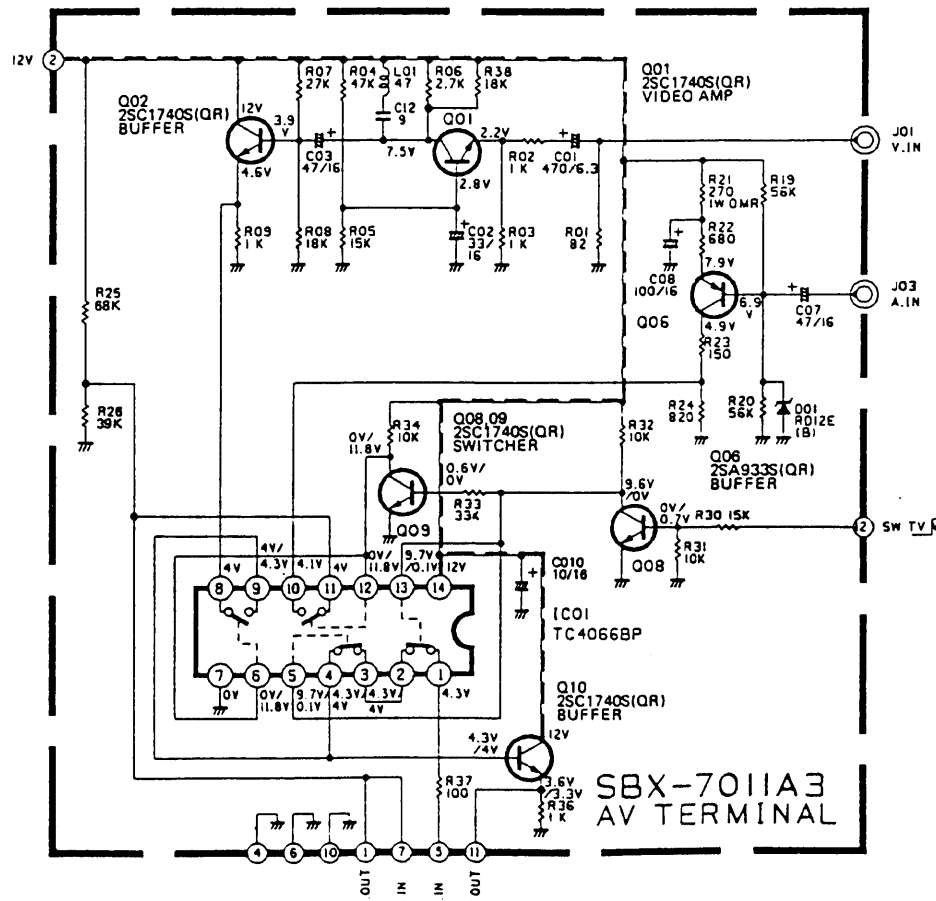
# AUTO SEARCH SCHEMATIC DIAGRAM



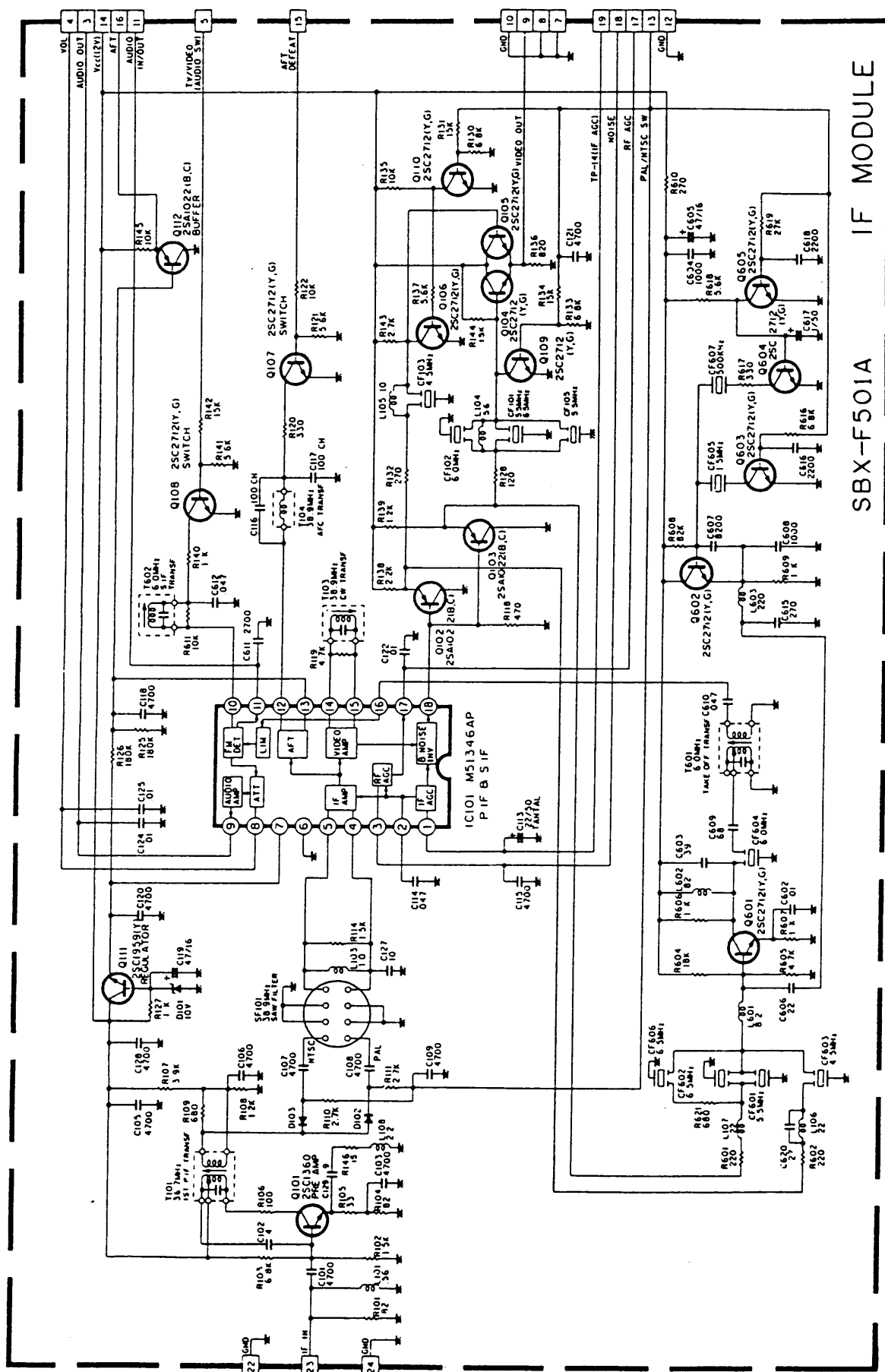
# RM-C408 SCHEMATIC DIAGRAM



# AV TERMINAL SCHEMATIC DIAGRAM



## SBX-F501A IF MODULE





## 11 FEB

stem  
Positive

'AL

;ECAM

NTSC  
3.58MHz

NTSC  
4.43MHz

Sym  
Elec

Item  
Position

91

## ECAM

**ITSC**

---

1.43MHz:

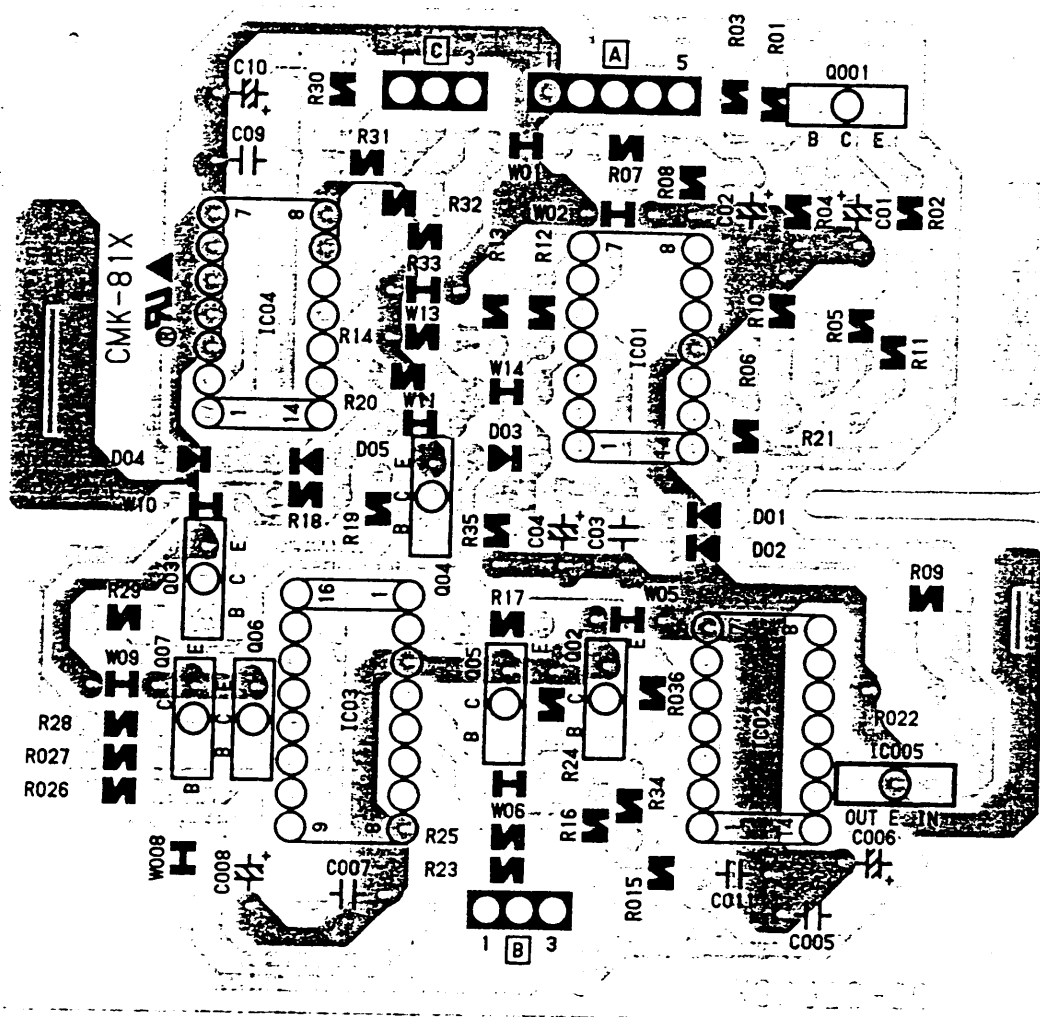
# DIFFERENT VOLTAGE LIST

Symbol Pin No Position	IC201						SBX-M002A			SBX-F501A	SBX-S004A		
	17	23	29	30	31	32	40	42	44	13	8	10	
AL	5.6V	5V	8.7V	3.5V	7.4V	3.5V	0V	11.7V	0.1V	0V	0.1V	4.7V	
ECAM	5.6V	0V	8.7V	3.5V	7.4V	3.5V	0V	0.1V	10.7V	0V	10.7V	0V	
TSC (3.58MHz)	0.7V	0.3V	2.1V	1.9V	2V	1.9V	12V	0.1V	0.1V	12V	0.1V	2.9V	
TSC (4.43MHz)	0.7V	5.2V	2.1V	1.9V	2V	1.9V	12V	0.1V	0.1V	0V	0.1V	5.4V	

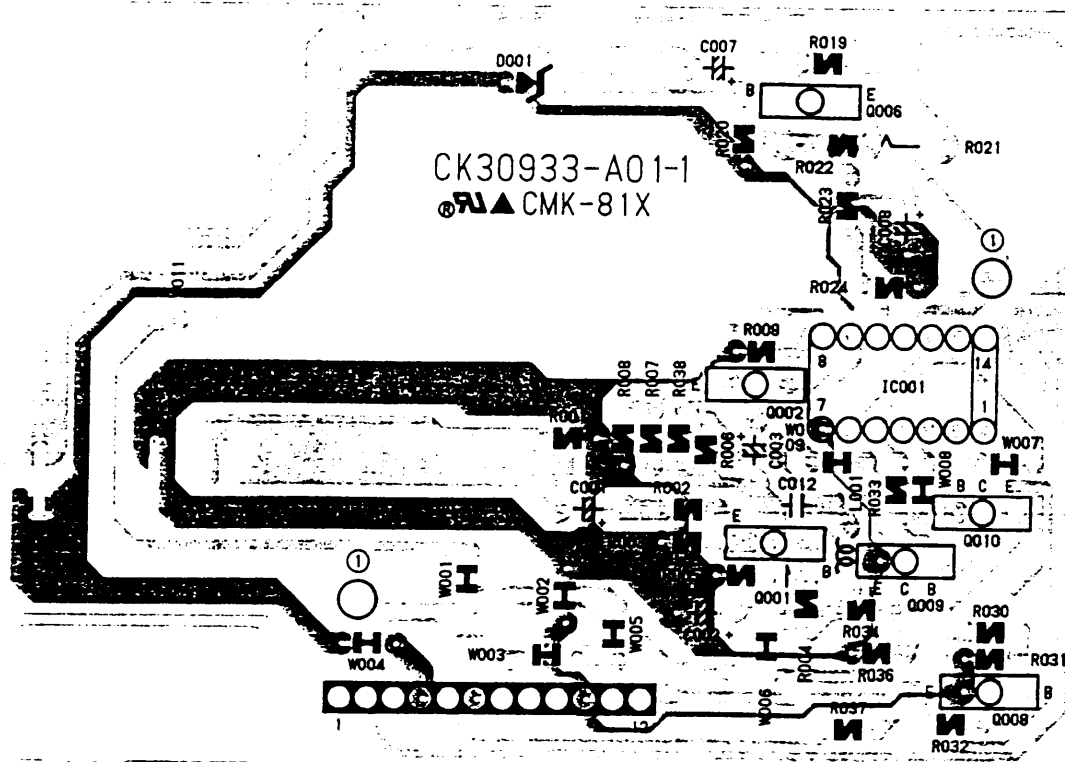
Symbol Electrode Position	Q202		Q301		Q302		Q303		Q304		Q305		Q306		Q401		Q721		Q722	
	B	C	B	C	B	C	B	C	B	C	B	C	B	C	B	C	B	C	B	C
AL	0V	5.6V	0V	12V	11.5V	12V	0V	5V	0V	6.5V	0.7V	0V	7.4V	6.6V	0V	5.4V	0V	11.7V	0.6V	0V
ECAM	0V	5.6V	0V	12V	11.5V	12V	0.7V	0V	0V	6.5V	0.7V	0V	7.4V	6.6V	0V	5.4V	0.7V	0.1V	0V	1.2V
TSC (3.58MHz)	0.7V	0V	0.7V	0V	12V	1.7V	0V	0.3V	0.7V	0V	0V	1.4V	2V	1.4V	0.7V	0V	0.7V	0.1V	0.2V	1.2V
TSC (4.43MHz)	0.7V	0V	0.7V	0V	12V	1.7V	0V	5.2V	0V	1.4V	0.7V	0V	2V	1.4V	0.7V	0V	0.7V	0.1V	0V	0V

## AUTO SEARCH PCB BACK PATTERN

↑ TOP



## AV.TERMI PCB BACK PATTERN



→ TOP